



DINION IP 7000 HD

NBN-71022 | NBN-71027 | NBN-71013



BOSCH

en Installation manual

Table of contents

1	Safety	5
1.1	Safety message explanation	5
1.2	Safety precautions	5
1.3	Important safety instructions	6
1.4	FCC and ICES compliance	7
1.5	Notices	8
2	Short information	9
3	System overview	10
3.1	DINION IP 7000 family	10
3.2	Using the camera	11
3.3	Operation with external systems	12
4	Planning	13
4.1	Unpacking	13
4.2	Contents	13
4.3	System requirements	13
5	Installation	14
5.1	Lens mounting	14
5.2	Mounting the camera	16
5.3	Local storage	17
6	Connection	18
6.1	Network (and PoE power)	18
6.2	Auxiliary power	20
6.3	Alarm	22
6.4	Audio	24
6.5	Video monitor	25
6.6	Data	26
7	Configuration	27
7.1	Setting the field of view	27
7.1.1	Camera install wizard	27
7.1.2	Using the install wizard	28
7.2	True Day/Night switching	30
7.3	Camera configuration	31
7.3.1	Bosch Video Client	31

7.4	Browser connection	32
7.4.1	Establishing the connection	32
7.4.2	Protected network	32
8	Troubleshooting	33
8.1	Function test	33
8.2	Resolving problems	33
8.3	Testing the network connection	37
8.4	Customer service	37
8.5	Terminal program	38
9	Maintenance	40
9.1	Cleaning	40
9.2	Repair	40
9.3	Reset	40
10	Decommissioning	41
10.1	Transfer	41
10.2	Disposal	41
11	Technical data	42
11.1	Specifications (NBN-71022)	42
11.2	Specifications (NBN-71027)	45
11.3	Specifications (NBN-71013)	48
11.4	Common specifications	51

1 Safety

1.1 Safety message explanation

**Caution!**

Indicates a hazardous situation which, if not avoided, could result in minor or moderate injury.

**Notice!**

Indicates a situation which, if not avoided, could result in damage to the equipment or environment, or data loss.

1.2 Safety precautions

**Caution!**

The Low Voltage power supply unit must comply with EN/UL 60950. The power supply must be a SELV-LPS unit or a SELV - Class 2 unit (Safety Extra Low Voltage - Limited Power Source).

**Caution!**

Installation should only be performed by qualified service personnel in accordance with the National Electrical Code (NEC 800 CEC Section 60) or applicable local codes.


**Caution!**

This device must be connected to earth (ground).

Safety (power) ground is indicated by the  symbol.

1.3 Important safety instructions

Read, follow, and retain for future reference all of the following safety instructions. Follow all warnings before operating the unit.

1. Clean only with a dry cloth. Do not use liquid cleaners or aerosol cleaners.
2. Do not install unit near any heat sources such as radiators, heaters, stoves, or other equipment (including amplifiers) that produce heat.
3. Never spill liquid of any kind on the unit.
4. Take precautions to protect the unit from power and lightning surges.
5. Adjust only those controls specified in the operating instructions.
6. Operate the unit only from the type of power source indicated on the label.
7. Unless qualified, do not attempt to service a damaged unit yourself. Refer all servicing to qualified service personnel.
8. Install in accordance with the manufacturer's instructions in accordance with applicable local codes.
9. Use only attachments/accessories specified by the manufacturer.
10. Connect the earth terminal of the camera  to the system earth of the installation to ensure correct safety and EMC/RFI protection.

1.4 FCC and ICES compliance

FCC & ICES Information

This equipment has been tested and found to comply with the limits for a **Class B** digital device, pursuant to *part 15* of the *FCC Rules*. These limits are designed to provide reasonable protection against harmful interference in a **residential installation**. This equipment generates, uses, and can radiate radio frequency energy and, if not installed and used in accordance with the instructions, may cause harmful interference to radio communications. However, there is no guarantee that interference will not occur in a particular installation. If this equipment does cause harmful interference to radio or television reception, which can be determined by turning the equipment off and on, the user is encouraged to try to correct the interference by one or more of the following measures:

- reorient or relocate the receiving antenna;
- increase the separation between the equipment and receiver;
- connect the equipment into an outlet on a circuit different from that to which the receiver is connected;
- consult the dealer or an experienced radio/TV technician for help.

Intentional or unintentional modifications, not expressly approved by the party responsible for compliance, shall not be made. Any such modifications could void the user's authority to operate the equipment. If necessary, the user should consult the dealer or an experienced radio/television technician for corrective action.

The user may find the following booklet, prepared by the Federal Communications Commission, helpful: *How to Identify and Resolve Radio-TV Interference Problems*. This booklet is available from the U.S. Government Printing Office, Washington, DC 20402, Stock No. 004-000-00345-4.

1.5 Notices

**Notice!**

Optical elements are sensitive and should be protected at all times. Do not allow objects to come into contact with glass surfaces and do not touch optical elements with your fingers.

**Notice!**

Video loss is inherent to digital video recording; therefore, Bosch Security Systems cannot be held liable for any damage that results from missing video information.

To minimize the risk of losing information, we recommend multiple, redundant recording systems, and a procedure to back up all analog and digital information.

**Notice!**

We recommend that memory cards only be used for local storage of alarm recordings.

2 Short information

This manual has been compiled with great care and the information it contains has been thoroughly verified. The text was correct at the time of printing, however, the content can change without notice. Bosch Security Systems accepts no liability for damage resulting directly or indirectly from faults, incompleteness or discrepancies between this manual and the product described.

Trademarks

All hardware and software product names used in this document are likely to be registered trademarks and must be treated accordingly.

More information

For more information please contact the nearest Bosch Security Systems location or visit www.boschsecurity.com

3 System overview

3.1 DINION IP 7000 family

The DINION IP 7000 family consists of high-performance HD surveillance cameras with superior imaging qualities:

- DINION IP 7000 HD for intelligent HD surveillance
- DINION IP dynamic 7000 HD for high dynamic range scenes
- DINION IP starlight 7000 HD for high-performance in challenging low light conditions

These IP cameras operate as network video servers and transmit video and control signals over Ethernet LANs and the Internet. The integrated encoder uses H.264 compression technology to give clear images while reducing bandwidth and storage requirements.

The cameras are easy to install and ready to use, and are eminently suitable for integration into large video surveillance systems.

Content-Based Imaging Technology

Content-Based Imaging Technology (C-BIT) is used to radically improve image quality in all lighting conditions and to identify areas for enhanced processing. The camera examines the scene using intelligent video analytics and provides feedback to re-tune the image processing. This provides better detail in the areas that matter and better all-round performance.

Hybrid operation

A surge-protected analog video output allows full hybrid operation. This means that high resolution IP video streaming and an analog video output via an SMB connector are available simultaneously. The hybrid functionality offers an easy migration path from legacy CCTV to a modern IP-based system.

System integration

The camera conforms to the ONVIF (Open Network Video Interface Forum) Profile S specification. This guarantees interoperability between network video products regardless of manufacturer.

Third-party integrators can easily access the internal feature set of the camera for integration into large projects. Visit the Bosch Integration Partner Program (IPP) website (ipp.boschsecurity.com) for more information.

3.2 Using the camera

To access the features of the camera, use a web browser. The browser provides live viewing of the camera streams in the interface window, and also allows you to access and change the extensive list of settings and parameters for camera configuration. Refer to the software manual for more information on the browser interface.

The camera recording and storage functions include local alarm recording and recording to iSCSI-based systems. The camera can also use the Bosch Video Recording Manager (VRM) to control recording and storage. Integration with the many Bosch recording solutions is seamless.

3.3 Operation with external systems

Using a web browser to access the camera's video streams and functions is the most direct way of using the camera. The Bosch Video Client can be downloaded and used for multiple-camera viewing, playback and configuration. A Bosch Video Security App is also available for remote viewing. If the camera is used in larger surveillance systems, the Bosch Video Management System offers a perfect integrated solution. Third-party integrators can easily access the internal feature set of the camera for integration into large projects. Access to IVA metadata is available to integrators via RTSP.

When connected to external systems, many of the camera configuration parameters are controlled by the system and not by the settings made via a web browser.

Bosch Video Client

The Bosch Video Client is a free Windows application for viewing, operating, controlling, and administering surveillance cameras and installations at remote locations. It offers a user-friendly interface for easy live viewing of multiple cameras, playback, forensic search and export.

Download the latest version of the application from:
<http://downloadstore.boschsecurity.com/>

Bosch Video Management System

The Bosch Video Management System is a unique enterprise IP video surveillance solution that provides seamless management of digital video, audio and data across any IP network. It is designed to work with Bosch security products as part of a total video surveillance management system.

4 Planning

4.1 Unpacking

This equipment should be unpacked and handled with care. If an item appears to have been damaged in shipment, notify the shipper immediately.

Verify that all parts are included. If any items are missing, notify your Bosch Security Systems Sales or Customer Service Representative.

The original packaging is the safest container in which to transport the unit and can be used if returning the unit for service.

4.2 Contents

The packaging contains:

- DINION IP 7000 camera
- Sensor protection cap (mounted on camera)
- Power connector
- Data/Alarm connector
- C/CS lens mount adapter
- Identification labels
- Quick install instructions

4.3 System requirements

- Computer with Windows XP/Vista/7 operating system, network access, and Microsoft Internet Explorer web browser version 9.0 or later (32-bit)
- **-or-**
- Computer with network access and reception software, for example Bosch Video Client and Bosch Video Management System

5 Installation

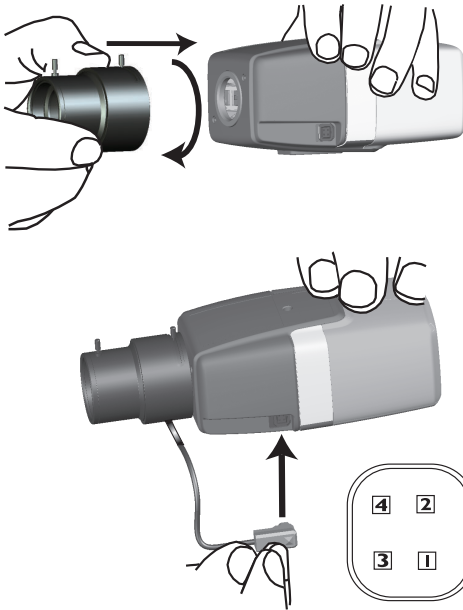
5.1 Lens mounting

This procedure is only required for cameras not having a factory fitted lens.



Notice!

Lenses weighing more than 0.5 kg (1.1lbs) must be separately supported.



Pin	DC iris lens
1	Damp -
2	Damp +

Pin	DC iris lens
3	Drive +
4	Drive -

1. Remove the sensor protection cap from the camera (if present).
2. Screw the lens onto the camera using the CS or C-mount (use the adapter ring to attach a C-mount lens).
3. Plug the lens connector into the camera (it automatically detects the type of lens).

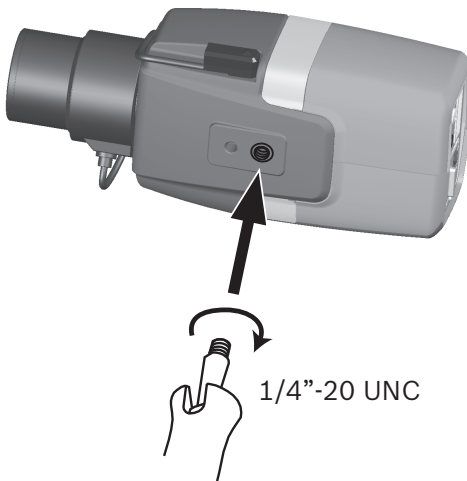
If a short circuit is detected on the lens connector, the lens circuit is automatically disabled to avoid internal damage. In this case, remove the lens connector and check the pin connections.

5.2 Mounting the camera

**Notice!**

Do not expose the image sensors to direct sunlight.

Do not obstruct the free flow of air around the camera.



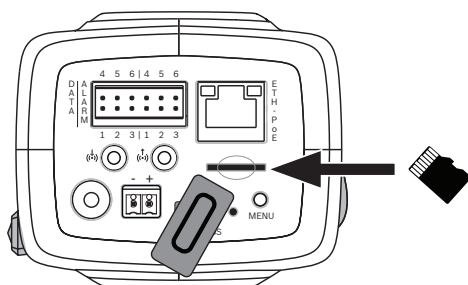
The camera can be mounted either from the top or from the bottom (1/4" 20 UNC thread).

5.3 Local storage

Notice!



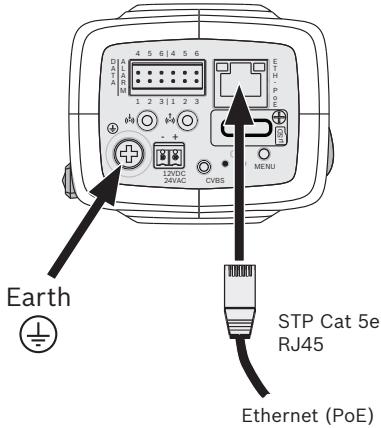
Local storage on SD cards should only be used for alarm recording. To minimize the risk of losing information, use multiple, redundant recording systems and a procedure to back up all digital information.



1. Unscrew the card slot cover.
2. Slide the memory card into the slot until it locks in place.
3. Screw the cover into place to seal the slot.

6 Connection

6.1 Network (and PoE power)



1. Connect the earth terminal of the camera to the system earth of the installation to ensure correct safety and EMC/RFI protection
2. Connect the camera to a 10/100 Base-T network:
 - Use STP Category 5e cable with RJ45 connectors (the camera network socket is Auto MDIX compliant).
 - Power can be supplied to the camera via the Ethernet cable compliant with the Power-over-Ethernet standard.

The LEDs beside the Ethernet connection indicate Power (red), IP connection (green) and IP traffic (green flashing).



Caution!

This device must be connected to earth (ground).

Safety (power) ground is indicated by the  symbol.

**Notice!**

Use only PoE approved devices.

Power-over-Ethernet can be connected at the same time as a 12 VDC or 24 VAC power supply. If auxiliary power (12 VDC or 24 VAC) and PoE is applied simultaneously, the camera selects the auxiliary input and shuts off PoE.

6.2 Auxiliary power



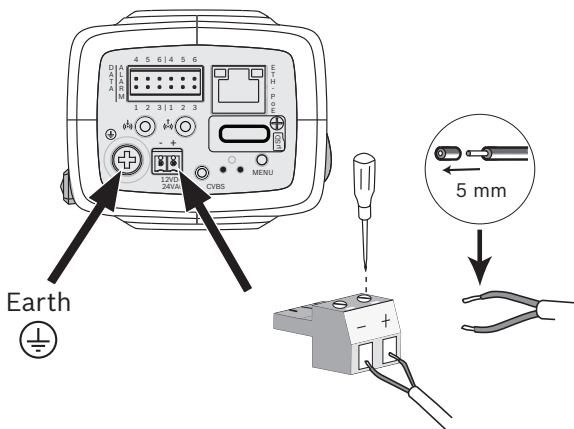
Caution!

Installation should only be performed by qualified service personnel in accordance with the National Electrical Code (NEC 800 CEC Section 60) or applicable local codes.



Caution!

The Low Voltage power supply unit must comply with EN/UL 60950. The power supply must be a SELV-LPS unit or a SELV - Class 2 unit (Safety Extra Low Voltage - Limited Power Source).

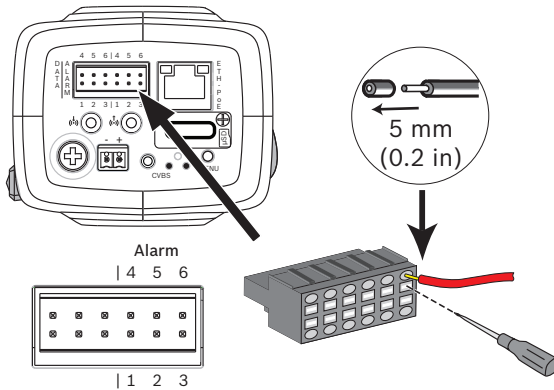


Connect an approved power supply unit with a rated supply voltage of 24 VAC or 12 VDC as follows:

1. Strip back 5 mm (0.2 in) of insulation on the power supply cable (must be 16-22 AWG stranded wire or 16-26 AWG solid wire).
2. Connect the earth terminal of the camera to the system earth of the installation to ensure correct safety and EMC/RFI protection.

3. Loosen the screws of the supplied 2-pole connector and insert the stripped wires, then tighten the screws again.
4. Insert the 2-pole connector into the camera power socket.

6.3 Alarm



Pin	Alarm socket
1	Alarm in 1
2	Alarm in 2
3	Alarm out contact 1
4	Ground
5	Ground
6	Alarm out contact 2

The maximum wire diameter is AWG 22-28 for both stranded and solid; cut back 5 mm (0.2 in) of insulation.

Alarm out

Use the alarm output for switching external devices such as lamps or sirens.

Alarm output switching capability:

- Max. voltage 30 VAC or +40 VDC. Max. 0.5 A continuous, 10 VA.

Alarm in:

Use the alarm input to connect external alarm devices such as door contacts or sensors:

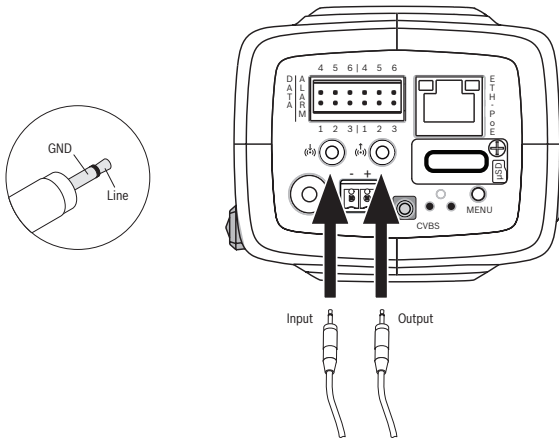
- TTL logic, +5 V nominal, +40 VDC max, DC coupled with 50 kOhm pull-up to +3.3 V.
- Configurable as active low or active high.

A zero potential make-contact or switch can be used as the actuator (use a bounce-free contact system).

Note:

If IR illumination is used, the alarm interface provides a stable switching control of the day/night function of the camera.

6.4 Audio



Connect audio devices to the **Audio In** and **Audio Out** connectors.

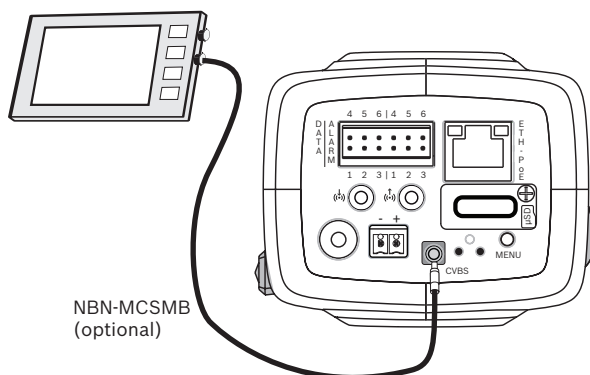
The unit has full-duplex mono audio for two-way communication between a speaker or door intercom system. The audio input signal is transmitted in sync. with the video signal.

Audio input: Line input level (not suitable for direct microphone signal); impedance 18 kOhm typical; 1 Vrms maximum input voltage.

Audio output: Line output level (not suitable for direct speaker connection); impedance 1.5 kOhm minimum; 0.85 Vrms maximum output voltage.

Wiring: Use shielded audio connection cable with advised maximum cable lengths for audio line input and output levels.

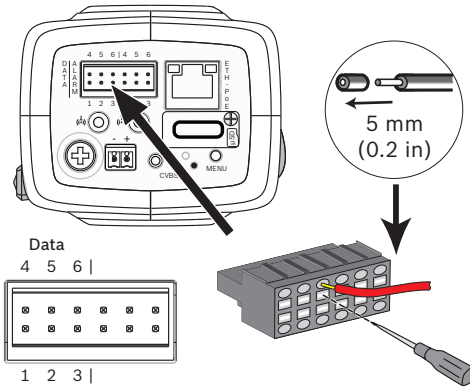
6.5 Video monitor



Use the composite video connector (CVBS) on the camera to connect an analog monitor for setting up the camera or as a permanent analog output for viewing or recording:

- To connect a monitor for set-up, use the optional 3 m cable (NBN-MCSMB-30M) to connect directly to the CVBS connector of a monitor.
- For a permanent analog output, use the optional 0.3 m cable (NBN-MCSMB-03M) to connect to a high quality coax cable.

6.6 Data



Pin	Data socket
1	Ground
2	RxD / Rx+
3	Rx-
4	Ground
5	TxD / Tx-
6	Tx+

Use the data connector to connect to an external device for sending control data from the camera to the external device. This data connection supports RS485, RS422, and RS232.

Note:

To ensure surge and electrostatic protection, keep the cable length between the camera and external device to less than 3 meters.

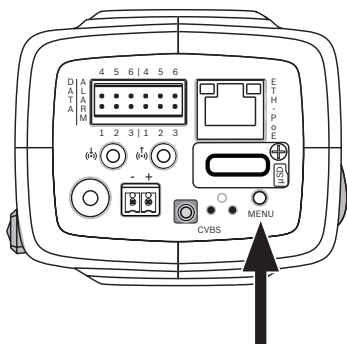
7 Configuration

7.1 Setting the field of view

When the camera is mounted and connected, its field of view and focus point must be set. To do this:

1. Connect a monitor to the CVBS connector on the rear of the camera.
2. Start the install wizard.

7.1.1 Camera install wizard



The **MENU** button on the rear panel is used for accessing the camera install wizard. The wizard fine-tunes the focus and optimizes picture sharpness in both bright and low-level lighting (for example, at night).

When there is a choice in the wizard, the options are selected by either a short press or a longer press of the **MENU** button. Select **EXIT** to close the wizard.

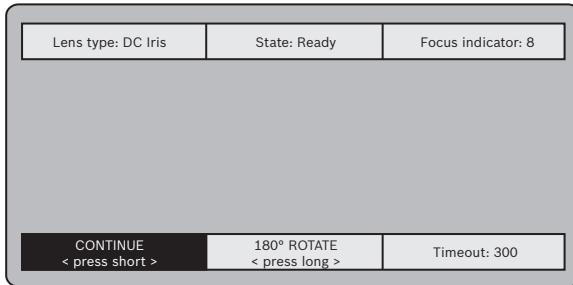


Notice!

Changing the application variant overwrites your camera settings with the factory defaults.

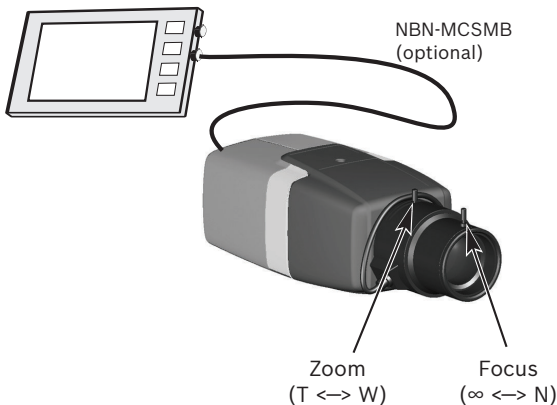
7.1.2 Using the install wizard

1. Power-up the camera and wait briefly before opening the camera install wizard.
2. Briefly press **Menu** to start the wizard and display the following screen on the monitor:



The lens type is identified and shown on the screen.
The iris is opened to its maximum value.

3. To rotate the image 180°, press and hold **Menu** until the image flips.
4. Briefly press **Menu** to continue.
5. Briefly press **Menu** to center the focus.
6. Manually adjust the focal length lever on the lens to obtain the required field of view.



7. Manually adjust the focus lever on the lens to obtain the sharpest image possible.

8. Briefly press **Menu** to start the automatic back focus adjustment (AUTO BACK FOCUS).
 - The motorized automatic back focus process runs.
 - The progress is shown on the monitor.
9. If the camera is not in focus, press **Menu** for a longer time to restart the wizard.
10. If the camera is correctly focused, briefly press the **Menu** button to exit the wizard.
 - The back focus position is stored.
 - The iris is set to its original value.

7.2 True Day/Night switching

The camera is equipped with a motorized IR filter. This mechanical IR filter is taken out of the optical path in low-light conditions.

The IR filter is controlled either:

- via an alarm input, or
- automatically, based on the observed light levels.

If **Auto** switching mode is selected, the camera automatically switches the filter depending on the observed light level. The switching level is adjustable. (If the day to night switching level is set to -15, certain borderline scene lighting conditions can cause the camera to switch back and forth between day and night modes. Set a different switching level to avoid this.)

Note:

If IR illumination is used, the alarm interface provides a stable switching control for the day/night function of the camera.

7.3 Camera configuration

The camera normally provides an optimal picture without the need for further adjustments. However, you can use a web browser via the network to access a menu to change camera settings such as user modes, passwords, picture settings and network settings.

Configuration options using the menu system on the camera itself are limited to basic setup via the Wizard.

7.3.1 Bosch Video Client

The Bosch Video Client is a free Windows application for viewing, operating, controlling, and administering surveillance cameras. It can be downloaded from:

<http://downloadstore.boschsecurity.com/>

The Configuration Manager, which is part of the Video Client, is a useful tool for locating the IP addresses of cameras in your network.

Refer to the Video Client Operator's Manual for more information.

7.4 Browser connection

A computer with Microsoft Internet Explorer is used to receive live images, control the unit, and replay stored sequences. The unit is configured over the network using the browser.

7.4.1 Establishing the connection

The unit must have a valid IP address to operate on your network and a compatible subnet mask. By default, DHCP is pre-set at the factory to **On** and so your DHCP server assigns an IP address. With no DHCP server the default address is 192.168.0.1

1. Start the Web browser.
2. Enter the IP address of the unit as the URL.
3. During initial installation, confirm any security questions that appear.

7.4.2 Protected network

If a RADIUS server is used for network access control (802.1x authentication), the unit must be configured first. To configure the unit, connect it directly to a computer using a network cable and configure the two parameters, **Identity** and **Password**. Only after these have been configured can communication with the unit via the network occur.

8 Troubleshooting

8.1 Function test

The camera offers a variety of configuration options. Therefore, check that it works properly after installation and configuration. This is the only way to ensure that the camera will function as intended in the event of an alarm.

Your check should include the following functions:

- Can you connect to the camera remotely
- Does the camera transmit all the data required?
- Does the camera respond as desired to alarm events?
- Is it possible to control peripheral devices, if necessary?

8.2 Resolving problems

The following table is intended to help identify the causes of malfunctions and correct them where possible.

Malfunction	Possible causes	Solution
No image transmission to remote location.	Defective camera.	Connect a local monitor to the camera and check the camera function.
	Faulty cable connections.	Check all cables, plugs, contacts and connections.
	Incorrect encoder stream property set for connection to hardware decoder.	Select the H.264 MP SD option on the Encoder Streams configuration page.

Malfunction	Possible causes	Solution
No connection established, no image transmission.	Incorrect unit configuration.	Check all configuration parameters (reset to factory default if necessary).
	Faulty installation.	Check all cables, plugs, contacts and connections.
	Wrong IP address.	Check the IP addresses (terminal program).
	Faulty data transmission within the LAN.	Check the data transmission with ping.
	The maximum number of connections has been reached.	Wait until there is a free connection and call the transmitter again.
No audio transmission to remote station.	Hardware fault.	Check that all connected audio units are operating correctly.
	Faulty cable connections.	Check all cables, plugs, contacts and connections.
	Incorrect configuration.	Check audio parameters on the Audio configuration and LIVE page functions pages.

Malfunction	Possible causes	Solution
	The audio voice connection is already in use by another receiver.	Wait until the connection is free and then call the sender again.
The unit does not report an alarm.	Alarm source is not selected.	Select possible alarm sources on the Alarm sources configuration page.
	No alarm response specified.	Specify the desired alarm response on the Alarm connections configuration page; if necessary change the IP address.
Control of cameras or other units is not possible.	The cable connection between the serial interface and the connected unit is not correct.	Check all cable connections and ensure all plugs are properly fitted.
	The interface parameters do not match those of the other unit connected.	Make sure that the settings of all units involved are compatible.
The unit is not operational after a firmware upload.	Power failure during programming by firmware file.	Have the unit checked by Customer Service and replace if necessary.

Malfunction	Possible causes	Solution
	Incorrect firmware file.	Enter the IP address of the unit followed by /main.htm in your Web browser and repeat the upload.
Placeholder with a red cross instead of the ActiveX components.	JVM not installed on your computer or not activated.	Install JVM.
Web browser contains empty fields.	Active proxy server in network.	Create a rule in the local computer's proxy settings to exclude local IP addresses.
The camera LED flashes red.	Firmware upload failed.	Repeat firmware upload.

8.3 Testing the network connection

The ping command can be used to check the connection between two IP addresses. This allows testing whether a device is active in the network.

1. Open the DOS command prompt.
2. Type `ping` followed by the IP address of the device.

If the device is found, the response appears as "Reply from ... ", followed by the number of bytes sent and the transmission time in milliseconds. Otherwise, the device cannot be accessed via the network. This might be because:

- The device is not properly connected to the network. Check the cable connections in this case.
- The device is not correctly integrated into the network. Check the IP address, subnet mask, and gateway address.

8.4 Customer service

If a fault cannot be resolved, please contact your supplier or system integrator, or go directly to Bosch Security Systems Customer Service.

The version numbers of the internal firmware can be viewed on a service page. Please note this information before contacting Customer Service.

1. In the address bar of your browser, after the unit IP address, enter: `/version`
for example: `192.168.0.80/version`
2. Write down the information or print out the page.

8.5 Terminal program

Data Terminal

If a camera cannot be found in the network or the connection to the network is interrupted, you can connect a data terminal to the camera for initial setup and for setting important parameters. The data terminal consists of a computer with a terminal program.

You require a serial transmission cable with a 9-pin Sub-D plug to connect to the computer.

The communications accessory included with Windows can be used as the terminal program.

1. Disconnect the camera from the Ethernet network before working with the terminal program.
2. Connect the serial interface of the camera using any available serial interface on the computer.

Configuring the Terminal

Before the terminal program can communicate with the camera, the transmission parameters must be matched. Make the following settings for the terminal program:

- 19,200 bps
- 8 data bits
- No parity check
- 1 stop bit
- No protocol

Command Inputs

After the connection has been established, you must log on to the camera to access the main menu. Other submenus and functions can be accessed using the on-screen commands.

1. If necessary, turn off the local echo so that entered values are not repeated on the display.
2. Enter one command at a time.
3. When you have entered a value, such as the IP address, check the characters you have entered before pressing Enter to transfer the values to the camera.

Assigning an IP Address

Before you can operate a camera in your network you must first assign it an IP address that is valid for your network.

The following default address is preset at the factory:

192.168.0.1

1. Start a terminal program such as HyperTerminal.
2. Enter the user name service. The terminal program displays the main menu.
3. Enter command 1 to open the IP menu.
4. Enter 1 again. The terminal program displays the current IP address and prompts you to enter a new IP address.
5. Enter the desired IP address and press Enter. The terminal program displays the new IP address.
6. Use the displayed commands for any additional settings you require.

Note:

You must reboot to activate the new IP address, a new subnet mask, or a gateway IP address.

Reboot

Briefly interrupt the power supply to the camera for a reboot (disconnect the power supply and switch on again after a few seconds).

Additional Parameters

Use the terminal program to check other basic parameters and modify them where necessary. Use the on-screen commands in the various submenus to do this.

9 Maintenance

9.1 Cleaning

It is generally sufficient to use a dry cloth for cleaning, but a moist lint-free cloth or leather shammy may also be used. Do not use liquid cleaners or aerosol cleaners.

9.2 Repair



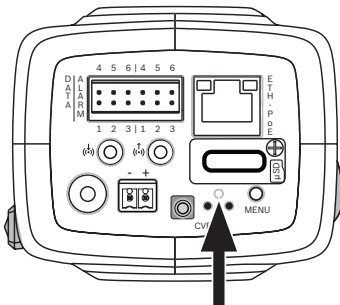
Notice!

Never open the casing of the unit

The unit does not contain any user-serviceable parts. Refer all repairs to suitable qualified specialists.

9.3 Reset

Use the factory reset button to restore the unit to its original settings. Any changes to the settings are overwritten by the factory defaults. A reset may be necessary, for example, if the unit has invalid settings that prevent it from functioning as desired.



10 Decommissioning

10.1 Transfer

The camera should only be passed on together with this installation guide.

10.2 Disposal



Disposal - Your Bosch product was developed and manufactured with high-quality material and components that can be recycled and reused. This symbol means that electronic and electrical appliances, which have reached the end of their working life, must be collected and disposed of separately from household waste material. Separate collecting systems are usually in place for disused electronic and electrical products. Please dispose of these units at an environmentally compatible recycling facility, per *European Directive 2012/19/EU*.

11 Technical data

11.1 Specifications (NBN-71022)

Power	
Power Supply	24 VAC 50/60 Hz 12 VDC Power-over-Ethernet 48 VDC nominal
Current Consumption	400 mA 500 mA IVA (12 VDC) 350 mA 450 mA IVA (24 VAC) 150 mA 175 mA IVA (PoE 48 VDC)
Power Consumption	4.8 W 6 W IVA (12 VDC) 8.4 W 10.8 W IVA (24 VAC) 7.2 W 8.4 W IVA (PoE 48 VDC)
PoE	IEEE 802.3af (802.3at Type 1)

Sensor	
Type	1/2.7-inch CMOS
Pixels	1952 x 1092 (2.03MP)

Video performance	
Sensitivity – (3200K, reflectivity 89%, F1.2, 30IRE)	
– Color	0.22 lx (0.022 fc)
– Mono	0.05 lx (0.005 fc)
Dynamic range	76 dB Wide Dynamic Range (92 dB with iAE)

Video streaming	
Video compression	H.264 (MP); M-JPEG
Streaming	Multiple configurable streams in H.264 and M-JPEG, configurable frame rate and bandwidth. Regions of Interest (ROI)
Overall IP Delay	Min. 120 ms, Max. 240 ms
GOP structure	IP, IBP, IBBP
Encoding interval	1 to 30 (25) ips
Resolutions (H x V)	
- 1080p HD	1920 x 1080
- 960p HD 4:3 (cropped)	1280 x 960
- 720p HD	1280 x 720
- Upright 9:16 (cropped)	400 x 720
- D1 4:3 (cropped)	704 x 480
- 480p SD	Encoding: 704 x 480; Displayed: 854 x 480
- 432p SD	768 x 432
- 288p SD	512 x 288
- 240p SD	Encoding: 352 x 240; Displayed: 432 x 240
- 144p SD	256 x 144

Video functions	
Day/Night	Color, Mono, Auto
White Balance	ATW (2500 to 10000K), ATWhold and manual
Shutter	Automatic Electronic Shutter (AES) Fixed (1/30 [1/25] to 1/15000) selectable Default shutter
Backlight compensation	Off, Auto
Contrast enhancement	On/off
Sharpness	Sharpness enhancement level selectable
Privacy Masking	Four independent areas, fully programmable
Video Motion Analysis	Motion+ or IVA option

11.2 Specifications (NBN-71027)

Power	
Power Supply	24 VAC 50/60 Hz 12 VDC Power-over-Ethernet 48 VDC nominal
Current Consumption	500 mA (12 VDC) 450 mA (24 VAC) 175 mA (PoE 48 VDC)
Power Consumption	6 W (12 VDC) 10.8 W (24 VAC) 8.4 W (PoE 48 VDC)
PoE	IEEE 802.3af (802.3at Type 1)

Sensor	
Type	1/3-inch CMOS
Pixels	2048 x 1536 (3MP)

Video performance	
Sensitivity – (3200K, reflectivity 89%, F1.2, 30IRE)	
– Color	0.25 lx (0.025 fc)
– Mono	0.08 lx (0.008 fc)
Dynamic range	90 dB High Dynamic Range (HDR) 106 dB HDR (with iAE)

Video streaming	
Video compression	H.264 (MP); M-JPEG
Streaming	Multiple configurable streams in H.264 and M-JPEG, configurable frame rate and bandwidth. Regions of Interest (ROI)
Overall IP Delay	Min. 120 ms, Max. 240 ms
GOP structure	IP, IBP, IBBP
Encoding interval	1 to 30 (25) ips
Resolutions (H x V)	
- 1080p HD	1920 x 1080
- 960p HD 4:3 (cropped)	1280 x 960
- 720p HD	1280 x 720
- Upright 9:16 (cropped)	400 x 720
- D1 4:3 (cropped)	704 x 480
- 480p SD	Encoding: 704 x 480; Displayed: 854 x 480
- 432p SD	768 x 432
- 288p SD	512 x 288
- 240p SD	Encoding: 352 x 240; Displayed: 432 x 240
- 144p SD	256 x 144

Video functions	
Day/Night	Color, Mono, Auto
White Balance	ATW (2500 to 10000K), ATWhold and manual
Shutter	Automatic Electronic Shutter (AES) Fixed (1/30 [1/25] to 1/15000) selectable Default shutter
High dynamic range	On/off
Backlight compensation	Off / On / iAE
Contrast enhancement	On/off
Noise reduction	Intelligent Dynamic Noise Reduction (iDNR) with separate temporal and spatial adjustments
Sharpness	Sharpness enhancement level selectable
Privacy Masking	Four independent areas, fully programmable
Video Motion Analysis	Intelligent Video Analysis (IVA)

11.3 Specifications (NBN-71013)

Power	
Power Supply	24 VAC 50/60 Hz 12 VDC Power-over-Ethernet 48 VDC nominal
Current Consumption	400 mA 500 mA IVA (12 VDC) 350 mA 450 mA IVA (24 VAC) 150 mA 175 mA IVA (PoE 48 VDC)
Power Consumption	4.8 W 6 W IVA (12 VDC) 8.4 W 10.8 W IVA (24 VAC) 7.2 W 8.4 W IVA (PoE 48 VDC)
PoE	IEEE 802.3af (802.3at Type 1)

Sensor	
Type	1/3-inch CMOS
Pixels	1312 x 1069 (1.4MP)

Video performance	
Sensitivity – (3200K, reflectivity 89%, 1/60 sec shutter time, F1.2, 30IRE)	
– Color	0.017 lx (0.0017 fc)
– Mono	0.0057 lx (0.00057 fc)
Dynamic range	84 dB WDR 100 dB WDR (with iAE)

Video streaming	
Video compression	H.264 (MP); M-JPEG
Streaming	Multiple configurable streams in H.264 and M-JPEG, configurable frame rate and bandwidth. Regions of Interest (ROI)
Overall IP Delay	Min. 120 ms, Max. 240 ms
GOP structure	IP, IBP, IBBP
Encoding interval	1 to 60 (50) ips
Resolutions (H x V)	
- 720p HD	1280 x 720
- 1024p 5:4 (cropped)	1280 x 1024 (30p max., no IVA)
- Upright 9:16 (cropped)	400 x 720
- D1 4:3 (cropped)	704 x 480
- 480p SD	Encoding: 704 x 480; Displayed: 854 x 480
- 432p SD	768 x 432
- 288p SD	512 x 288
- 240p SD	Encoding: 352 x 240; Displayed: 432 x 240
- 144p SD	256 x 144

Video functions	
Day/Night	Color, Mono, Auto
White Balance	ATW (2500 to 10000K), ATWhold and manual
Shutter	Automatic Electronic Shutter (AES) Fixed (1/30 [1/25] to 1/15000) selectable Default shutter
Backlight compensation	Off / On / iAE (BLC)
Contrast enhancement	On/off
Noise reduction	Intelligent Dynamic Noise Reduction (iDNR) with separate temporal and spatial adjustments
Sharpness	Sharpness enhancement level selectable
Privacy Masking	Four independent areas, fully programmable
Video Motion Analysis	Intelligent Video Analysis (IVA)

11.4 Common specifications

Audio streaming	
Audio Streaming	Full duplex / half duplex
Signal-to-noise ratio	> 50 dB
Audio compression	AAC-LC, G.711, L16 (live and recording)
Input/output	
Analog video out	CVBS (PAL/NTSC), 1 Vpp, SMB, 75 Ohm (surge protected)
Analog video aspect ratio	4:3 letterbox, 4:3 cropped, or 16:9 mode
Audio	1 x mono line in, 1 x mono line out
– connector	3.5 mm stereo jack
– signal line in	12 kOhm typical, 1 Vrms max
– signal line out	1 Vrms at 1.5 kOhm typical,
Alarm	2 inputs
– connector	Clamp (non-isolated closing contact)
– activation voltage	+5 VDC to +40 VDC (+3.3 VDC with DC-coupled 22 kOhm pull-up resistor)
Relay	1 output
– connector	Clamp
– voltage	30 VAC or +40 VDC Maximum 0.5 A continuous, 10VA
Data port	RS-232/422/485

Local storage	
Internal RAM	10 s pre-alarm recording
Memory card slot	Supports up to 32 GB SDHC / 2 TB SDXC card. (An SD card of Class 6 or higher is recommended for HD recording)
Recording	Continuous recording, ring recording, alarm/events/schedule recording

Network	
Protocols	IPv4, IPv6, UDP, TCP, HTTP, HTTPS, RTP/RTCP, IGMP V2/V3, ICMP, ICMPv6, RTSP, FTP, Telnet, ARP, DHCP, NTP (SNTP), SNMP (V1, MIB-II), 802.1x, DNS, DNSv6, DDNS (DynDNS.org, selfHOST.de, no-ip.com), SMTP, iSCSI, UPnP (SSDP), DiffServ (QoS), LLDP, SOAP, Dropbox, CHAP, digest authentication
Encryption	TLS 1.0, SSL, DES, 3DES, AES (optional)
Ethernet	10/100 Base-T, auto-sensing, half/full duplex
Connectivity	ONVIF Profile S, Auto-MDIX

Software	
Unit Configuration	Via web browser or Configuration Manager
Firmware update	Remotely programmable
Software viewer	Web browser, Bosch Video Client, or third party software

Optical	
Lens mount	CS mount (C-mount with adapter ring)
Lens connector	Standard 4-pin DC-iris connector
Lens Types	Manual and DC-Iris auto-detect with override DC-iris drive: max. 50 mA continuous
Lens Controls	Wizard from web page or camera button

Mechanical	
Dimensions (W x H x L)	78 x 66 x140 mm (3.07 x 2.6 x 5.52 inch) without lens
Weight	690 g (1.52 lb) without lens
Color	RAL 9007 Metallic Titanium
Tripod Mount	Bottom (isolated) and top 1/4-inch 20 UNC

Environmental	
Operating Temperature	-20°C to +55°C (-4°F to 131°F)
Operating Temperature (IVA)	-20°C to +50°C (-4°F to 122°F)
Storage Temperature	-30°C to +70°C (-22°F to +158°F)
Operating Humidity	20% to 93% RH
Storage Humidity	up to 98% RH

Bosch Security Systems B.V.

Torenallee 49

5617 BA Eindhoven

The Netherlands

www.boschsecurity.com

© Bosch Security Systems B.V., 2014