

## Introduction

This application note describes the I2C protocol used in the STM32 microcontroller bootloader. It details each supported command.

For more information about the I2C hardware resources and requirements for the device bootloader, please refer to application note AN2606 “STM32 microcontroller system memory boot mode”.

This document applies to the STM32 products embedding bootloader versions V5.x, V6.x, V7.x, V8.x, V9.x, V10.x, V11.x and V13.x, as specified in the AN2606. These products are listed in [Table 1](#), and are referred to as STM32 throughout the document.

**Table 1. Applicable products**

Type	Part number or product series
Microcontrollers	STM32L0 series: STM32L031xx, STM32L041xx, STM32L051xx, STM32L052xx, STM32L053xx, STM32L062xx, STM32L063xx, STM32L07xxx, STM32L08xxx
	STM32L1 series.
	STM32L4 series: STM32L476xx, STM32L486xx
	STM32F0 series: STM32F03xxx, STM32F04xxx, STM32F05xxx, STM32F07xxx, STM32F098xx
	STM32F1 series.
	STM32F2 series.
	STM32F3 series: STM32F301xx, STM32F302xx, STM32F303xx, STM32F318xx, STM32F328xx, STM32F334xx, STM32F358xx, STM32F373xx, STM32F378xx, STM32F398xx
	STM32F4 series: STM32F401xx, STM32F405xx, STM32F407xx, STM32F410xx, STM32F411xx, STM32F415xx, STM32F417xx, STM32F427xx, STM32F429xx, STM32F437xx, STM32F439xx, STM32F446xx, STM32F469xx, STM32F479xx
	STM32F7 series: STM32F74xxx, STM32F75xxx

# Contents

<b>1</b>	<b>I2C bootloader code sequence</b>	<b>5</b>
<b>2</b>	<b>Bootloader command set</b>	<b>6</b>
2.1	Get command	8
2.2	Get version command	11
2.3	Get ID command	12
2.4	Read memory command	14
2.5	Go command	17
2.6	Write memory command	20
2.7	Erase memory command	23
2.8	Write protect command	26
2.9	Write unprotect command	29
2.10	Readout protect command	30
2.11	Readout unprotect command	32
2.12	No-Stretch Write memory command	34
2.13	No-Stretch Erase memory command	37
2.14	No-Stretch Write protect command	40
2.15	No-Stretch Write unprotect command	43
2.16	No-Stretch Readout protect command	44
2.17	No-Stretch Readout unprotect command	46
<b>3</b>	<b>Bootloader protocol version evolution</b>	<b>49</b>
<b>4</b>	<b>Revision history</b>	<b>50</b>

List of tables

Table 1. Applicable products ..... 1

Table 2. I2C bootloader commands ..... 6

Table 3. Bootloader protocol versions ..... 49

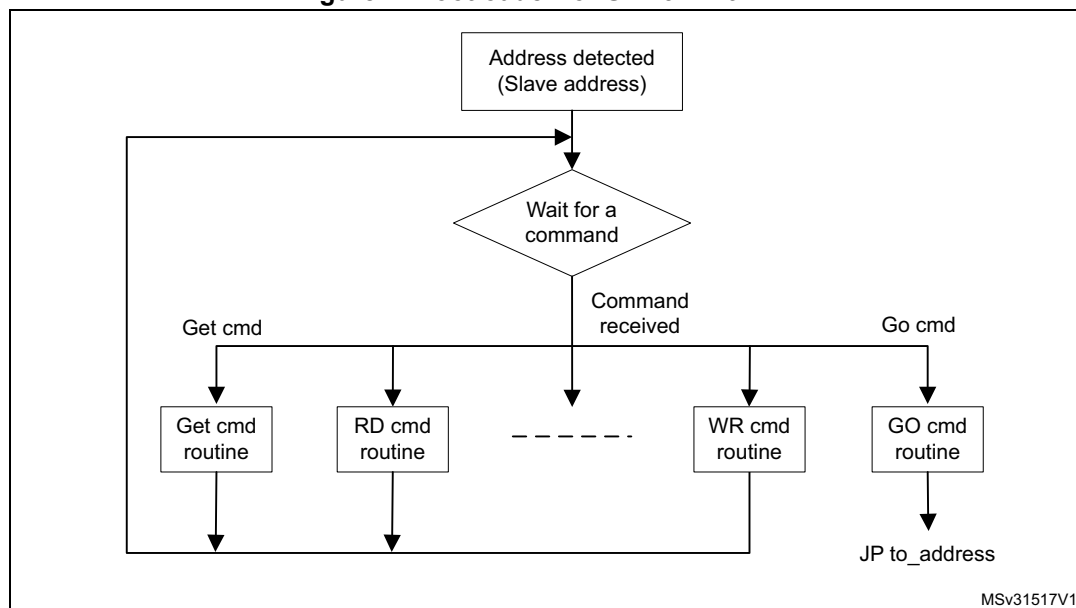
Table 4. Document revision history ..... 50

## List of figures

Figure 1.	Bootloader for STM32 with I2C . . . . .	5
Figure 2.	Get command: host side . . . . .	8
Figure 3.	Get command: device side . . . . .	9
Figure 4.	Get version: host side . . . . .	11
Figure 5.	Get version: device side . . . . .	12
Figure 6.	Get ID command: host side . . . . .	13
Figure 7.	Get ID command: device side . . . . .	13
Figure 8.	Read memory command: host side . . . . .	15
Figure 9.	Read memory command: device side . . . . .	16
Figure 10.	Go command: host side . . . . .	18
Figure 11.	Go command: device side . . . . .	19
Figure 12.	Write memory command: host side . . . . .	21
Figure 13.	Write memory command: device side . . . . .	22
Figure 14.	Erase memory command: host side . . . . .	24
Figure 15.	Erase memory command: device side . . . . .	25
Figure 16.	Write protect command: host side . . . . .	27
Figure 17.	Write protect command: device side . . . . .	28
Figure 18.	Write unprotect command: host side . . . . .	29
Figure 19.	Write unprotect command: device side . . . . .	30
Figure 20.	Readout protect command: host side . . . . .	31
Figure 21.	Readout protect command: device side . . . . .	31
Figure 22.	Readout unprotect command: host side . . . . .	32
Figure 23.	Readout unprotect command: device side . . . . .	33
Figure 24.	No-Stretch Write memory command: host side . . . . .	35
Figure 25.	No-Stretch Write memory command: device side . . . . .	36
Figure 26.	No-Stretch Erase memory command: host side . . . . .	38
Figure 27.	No-Stretch Erase memory command: device side . . . . .	39
Figure 28.	No-Stretch Write protect command: host side . . . . .	41
Figure 29.	No-Stretch Write protect command: device side . . . . .	42
Figure 30.	No-Stretch Write unprotect command: host side . . . . .	43
Figure 31.	No-Stretch Write unprotect command: device side . . . . .	44
Figure 32.	NoStretch Readout protect command: host side . . . . .	45
Figure 33.	No-Stretch Readout protect command: device side . . . . .	46
Figure 34.	No-Stretch Readout unprotect command: host side . . . . .	47
Figure 35.	No-Stretch Readout unprotect command: device side . . . . .	48

# 1 I2C bootloader code sequence

Figure 1. Bootloader for STM32 with I2C



**Note:** The I2C slave address for each product's bootloader is specified in the AN2606.

Once the system memory boot mode has been entered, and the STM32 microcontroller has been configured (for more details, refer to your STM32 system memory boot mode application note), the bootloader code begins to scan the I2C\_SDA line pin, waiting to detect its own address on the bus. Once detected, the I2C bootloader firmware begins receiving host commands.

## 2 Bootloader command set

"No Stretch" commands are supported starting from V1.1 protocol version and allow a better management of commands when the Host has to wait a significant time before operation is accomplished by Bootloader.

It is highly recommended to use the "No Stretch" commands whenever possible instead of equivalent regular commands.

The supported commands are listed in [Table 2](#).

**Table 2. I2C bootloader commands**

Commands <sup>(1)</sup>	Command code	Command description
Get <sup>(2)</sup>	0x00	Gets the version and the allowed commands supported by the current version of the bootloader
Get Version <sup>(2)</sup>	0x01	Gets the bootloader version
Get ID <sup>(2)</sup>	0x02	Gets the chip ID
Read Memory	0x11	Reads up to 256 bytes of memory, starting from an address specified by the application
Go <sup>(3)</sup>	0x21	Jumps to user application code located in the internal Flash memory
Write Memory <sup>(3)</sup>	0x31	Writes up to 256 bytes to the memory, starting from an address specified by the application
No-Stretch Write Memory <sup>(3)(4)</sup>	0x32	Writes up to 256 bytes to the memory, starting from an address specified by the application and returns busy state while operation is ongoing
Erase	0x44	Erases from one to all Flash memory pages or sectors using two-byte addressing mode
No-Stretch Erase <sup>(3)(4)</sup>	0x45	Erases from one to all Flash memory pages or sectors using two-byte addressing mode and returns busy state while operation is ongoing
Write Protect	0x63	Enables write protection for some sectors
No-Stretch Write Protect <sup>(4)</sup>	0x64	Enables write protection for some sectors and returns busy state while operation is ongoing
Write Unprotect	0x73	Disables write protection for all Flash memory sectors
No-Stretch Write Unprotect <sup>(4)</sup>	0x74	Disables write protection for all Flash memory sectors and returns busy state while operation is ongoing
Readout Protect	0x82	Enables read protection
No-Stretch Readout Protect <sup>(4)</sup>	0x83	Enables read protection and returns busy state while operation is ongoing
Readout Unprotect <sup>(2)</sup>	0x92	Disables read protection
No-Stretch Readout Unprotect <sup>(2)(4)</sup>	0x93	Disables read protection and returns busy state while operation is ongoing

1. If a denied command is received, or if an error occurs during the command execution, the bootloader sends a NACK byte and goes back to command checking.

2. Read protection - When the RDP (read protection) option is active, only this limited subset of commands is available. All other commands are NACKed and have no effect on the device. Once the RDP has been removed, the other commands become active.
3. Please refer to STM32 product datasheet and AN2606: STM32 microcontroller system memory boot mode to know which memory spaces are valid for these commands.
4. No-Stretch commands are available only with I2C protocol V1.1.

### No-Stretch commands

No-Stretch commands allows executing Write, Erase, Write Protect, Write Unprotect, Read Protect and Read Unprotect operations without stretching I2C line while bootloader is performing the operation. These commands allow communicating with other devices on the bus while bootloader performs operations that require waiting time.

The difference between these commands and the standard commands is at the end of the command: When Host requests ACK/NACK at the end of the command, instead of stretching the I2C line, the bootloader responds with a third state which is Busy (0x76). When Host receives Busy state, it should poll again on the state and read one byte till it receives ACK or NACK response.

### Communication safety

All communication from the programming host to the device is verified by checksum. Received blocks of data bytes are XORed. A byte containing the computed XOR of all previous bytes is added to the end of each communication (checksum byte). By XORing all received bytes, data + checksum, the result at the end of the packet must be 0x00.

For each command, the host sends a byte and its complement (XOR = 0x00).

Each packet is either accepted (ACK answer) or discarded (NACK answer):

- ACK = 0x79
- NACK = 0x1F

With No-Stretch commands Busy state is sent instead of ACK or NACK when an operation is ongoing:

- BUSY= 0x76

**Note:** The host's frame can be one of the following:

- *Send Command frame: The host initiates communication as master transmitter, and sends two bytes to the device: command code + XOR.*
- *Wait for ACK/NACK frame: The host initiates an I2C communication as master receiver, and receives one byte from the device: ACK or NACK or BUSY.*
- *Receive Data frame: The host initiates an I2C communication as master receiver, and receives the response from the device. The number of received bytes depends on the command.*
- *Send Data frame: The host initiates an I2C communication as master transmitter, and sends the needed bytes to the device. The number of transmitted bytes depends on the command.*

**Caution:** For Write, Erase and Read Unprotect commands, the host has to respect timings related to these commands (i.e. page write, sector erase, ...) specified in product datasheets. As an example, when launching an Erase command, the host has to wait (before the last ACK of the command) for a duration equivalent to the maximum sector/page erase time specified in datasheet (or at least the typical sector/page erase time).

**Caution:** For I2C communication, a timeout mechanism is implemented which must be respected for Bootloader commands to be executed correctly. This timeout is implemented between two I2C frames in the same command. For example, for a Write memory command, a timeout is inserted between the command-sending frame and address memory-sending frame. Also, the same timeout period is inserted between two successive instances of data reception or transmission in the same I2C frame. If the timeout period has elapsed, a system reset is generated to avoid a Bootloader crash. Please refer to AN2606, section “I2C connection timing” to get the I2C timeout value of each STM32 product.

## 2.1 Get command

The Get command allows you to get the version of the bootloader and the supported commands. When the bootloader receives the Get command, it transmits the bootloader version and the supported command codes to the host, as described in [Figure 2](#).

**Figure 2. Get command: host side**

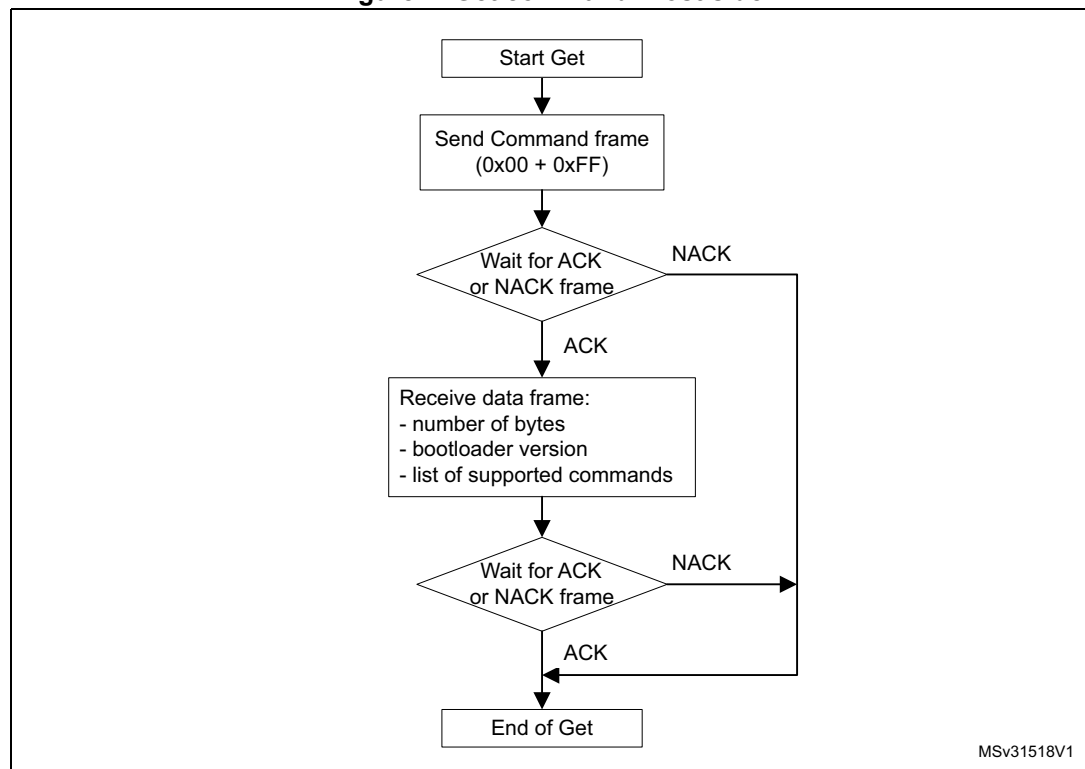
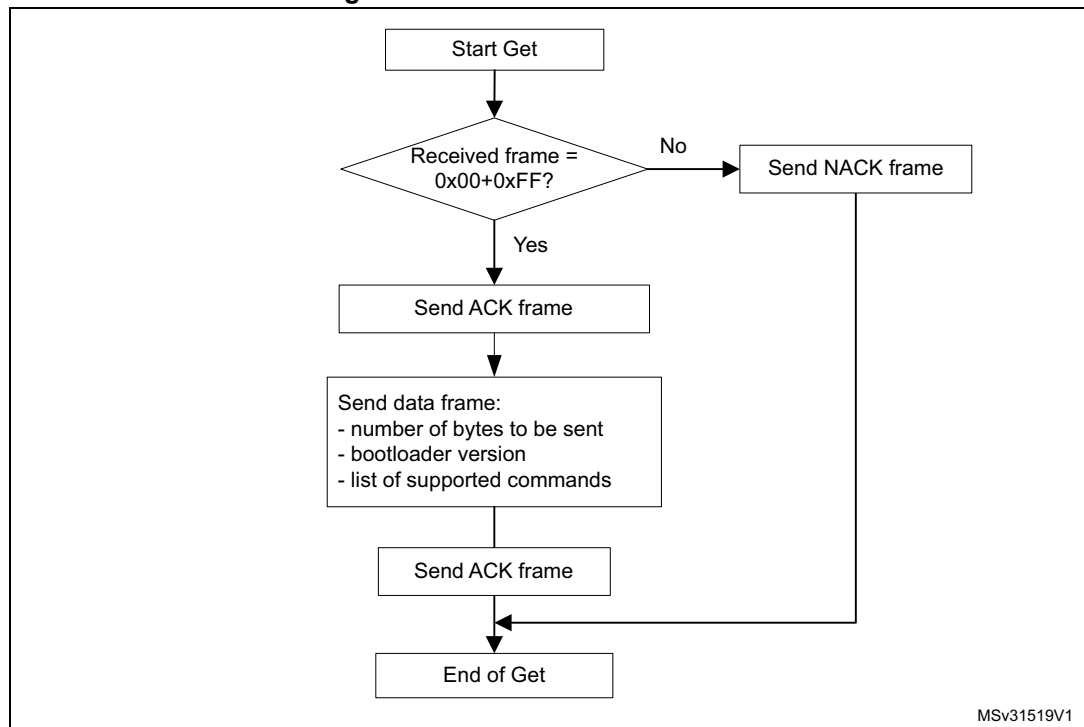




Figure 3. Get command: device side



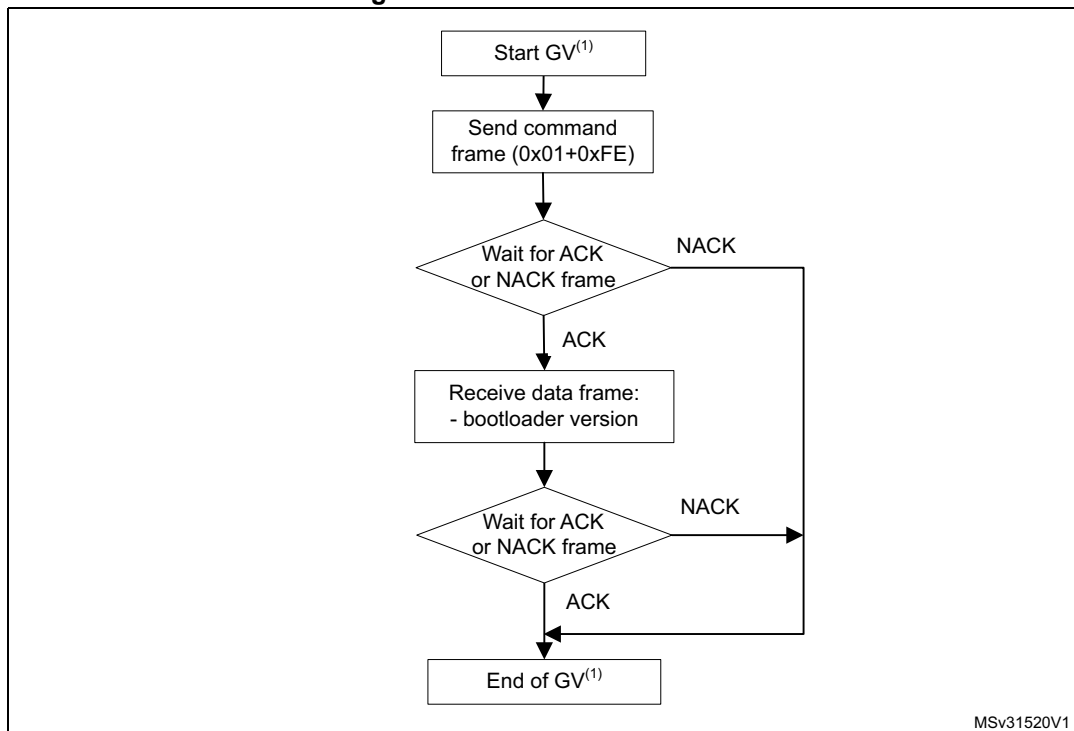
The STM32 sends the bytes as follows:

- For I2C protocol V1.0:
  - Byte 1: ACK
  - Byte 2: N = 11 = the number of bytes to follow - 1 except current and ACKs.
  - Byte 3: Bootloader version 0x10 = Version 1.0
  - Byte 4: 0x00 - Get command
  - Byte 5: 0x01 - Get Version
  - Byte 6: 0x02 - Get ID
  - Byte 7: 0x11 - Read Memory command
  - Byte 8: 0x21 - Go command
  - Byte 9: 0x31 - Write Memory command
  - Byte 10: 0x44 - Erase command
  - Byte 11: 0x63 - Write Protect command
  - Byte 12: 0x73 - Write Unprotect command
  - Byte 13: 0x82 - Readout Protect command
  - Byte 14: 0x92 - Readout Unprotect command
  - Byte 15: ACK
- For I2C protocol V1.1:
  - Byte 1: ACK
  - Byte 2: N = 17 = the number of bytes to follow - 1 except current and ACKs.
  - Byte 3: Bootloader version 0x11 = Version 1.1
  - Byte 4: 0x00 - Get command
  - Byte 5: 0x01 - Get Version
  - Byte 6: 0x02 - Get ID
  - Byte 7: 0x11 - Read Memory command
  - Byte 8: 0x21 - Go command
  - Byte 9: 0x31 - Write Memory command
  - Byte 10: 0x44 - Erase command
  - Byte 11: 0x63 - Write Protect command
  - Byte 12: 0x73 - Write Unprotect command
  - Byte 13: 0x82 - Readout Protect command
  - Byte 14: 0x92 - Readout Unprotect command
  - Byte 15: 0x32 - No-Stretch Write Memory command
  - Byte 16: 0x45 - No-Stretch Erase command
  - Byte 17: 0x64 - No-Stretch Write Protect command
  - Byte 18: 0x74 - No-Stretch Write Unprotect command
  - Byte 19: 0x83 - No-Stretch Readout Protect command
  - Byte 20: 0x93 - No-Stretch Readout Unprotect command
  - Byte 21: ACK

## 2.2 Get version command

The Get Version command is used to get the I2C bootloader version. When the bootloader receives the command, it transmits the information described below (bootloader version) to the host.

**Figure 4. Get version: host side**

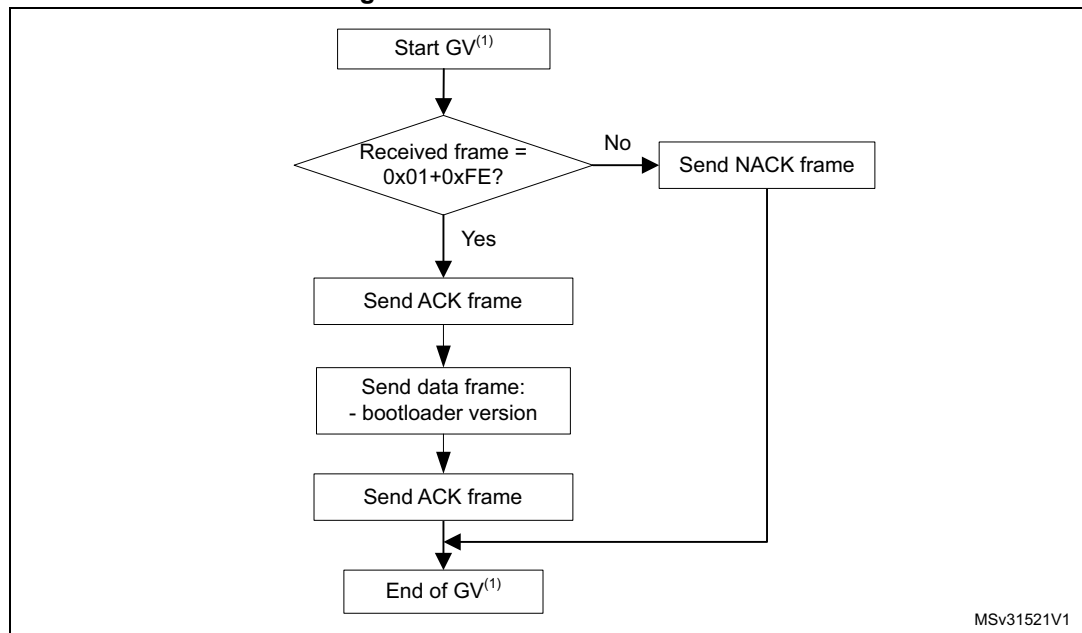


1. GV = Get Version.

The STM32 sends the bytes as follows:

- Byte 1: ACK
- Byte 2: Bootloader version ( $0 < \text{Version} \leq 255$ ) (for example, 0x10 = Version 1.0)
- Byte 3: ACK

Figure 5. Get version: device side



1. GV = Get Version

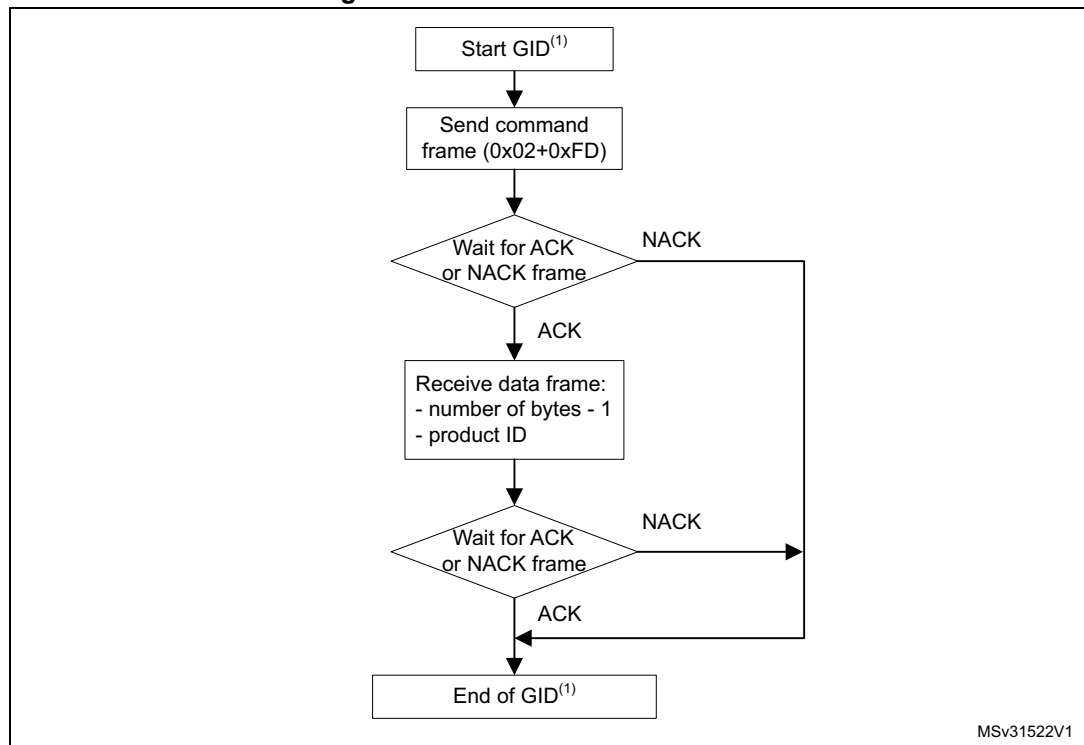
## 2.3 Get ID command

The Get ID command is used to get the version of the chip ID (identification). When the bootloader receives the command, it transmits the product ID to the host.

The STM32 device sends the bytes as follows:

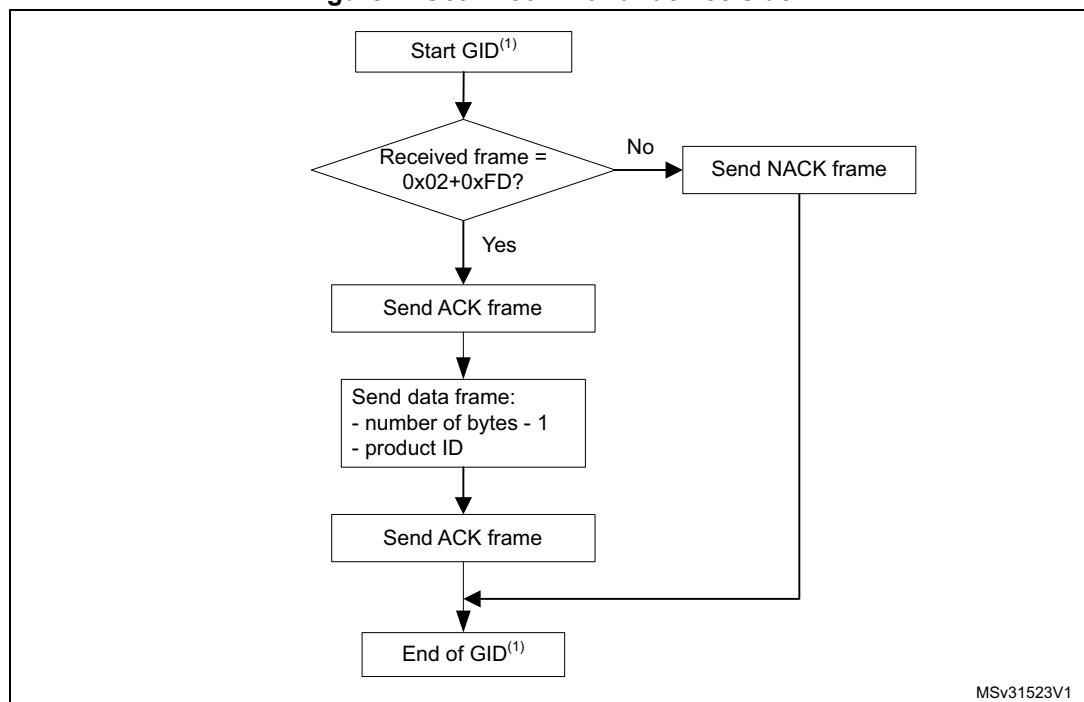
- Byte 1: ACK
- Byte 2: N = the number of bytes - 1 (for STM32, N = 1), except for current byte and ACKs.
- Bytes 3-4: PID (product ID)
  - byte 3 = MSB
  - byte 4 = LSB
- Byte 5: ACK

Figure 6. Get ID command: host side



1. GID = Get ID.

Figure 7. Get ID command: device side



1. GID = Get ID.

## 2.4 Read memory command

The Read Memory command is used to read data from any valid memory address.

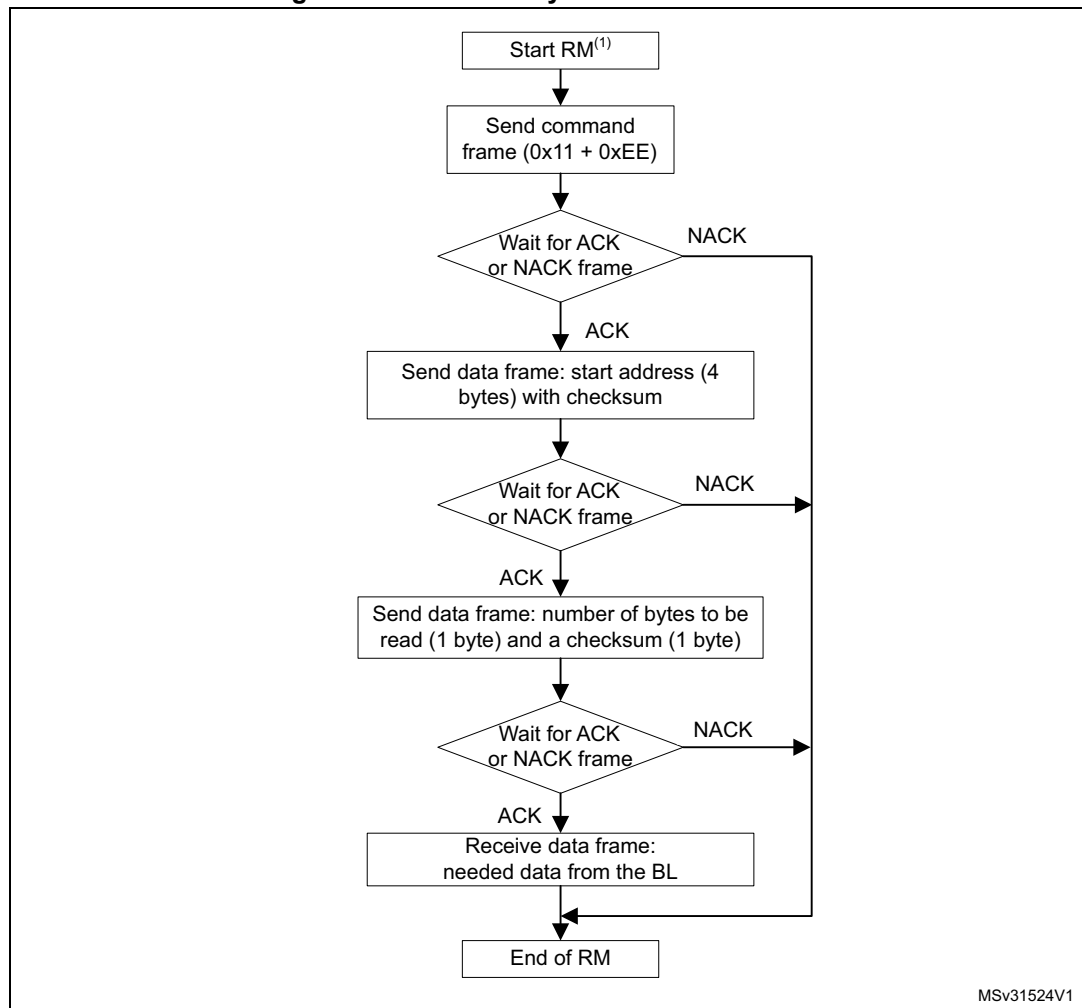
When the bootloader receives the Read Memory command, it transmits the ACK byte to the application. The bootloader then waits for a 4-byte address (byte 1 is the address MSB, and byte 4 is the LSB) and a checksum byte, then it checks the received address. If the address is valid and the checksum is correct, the bootloader transmits an ACK byte; otherwise, it transmits a NACK byte and aborts the command.

If the address is valid and the checksum is correct, the bootloader waits for the number of bytes to be transmitted (N bytes), and for its complemented byte (checksum). If the checksum is correct, the bootloader transmits the needed data to the application, starting from the received address. If the checksum is not correct, it sends a NACK before aborting the command.

The host sends bytes to the STM32 as follows:

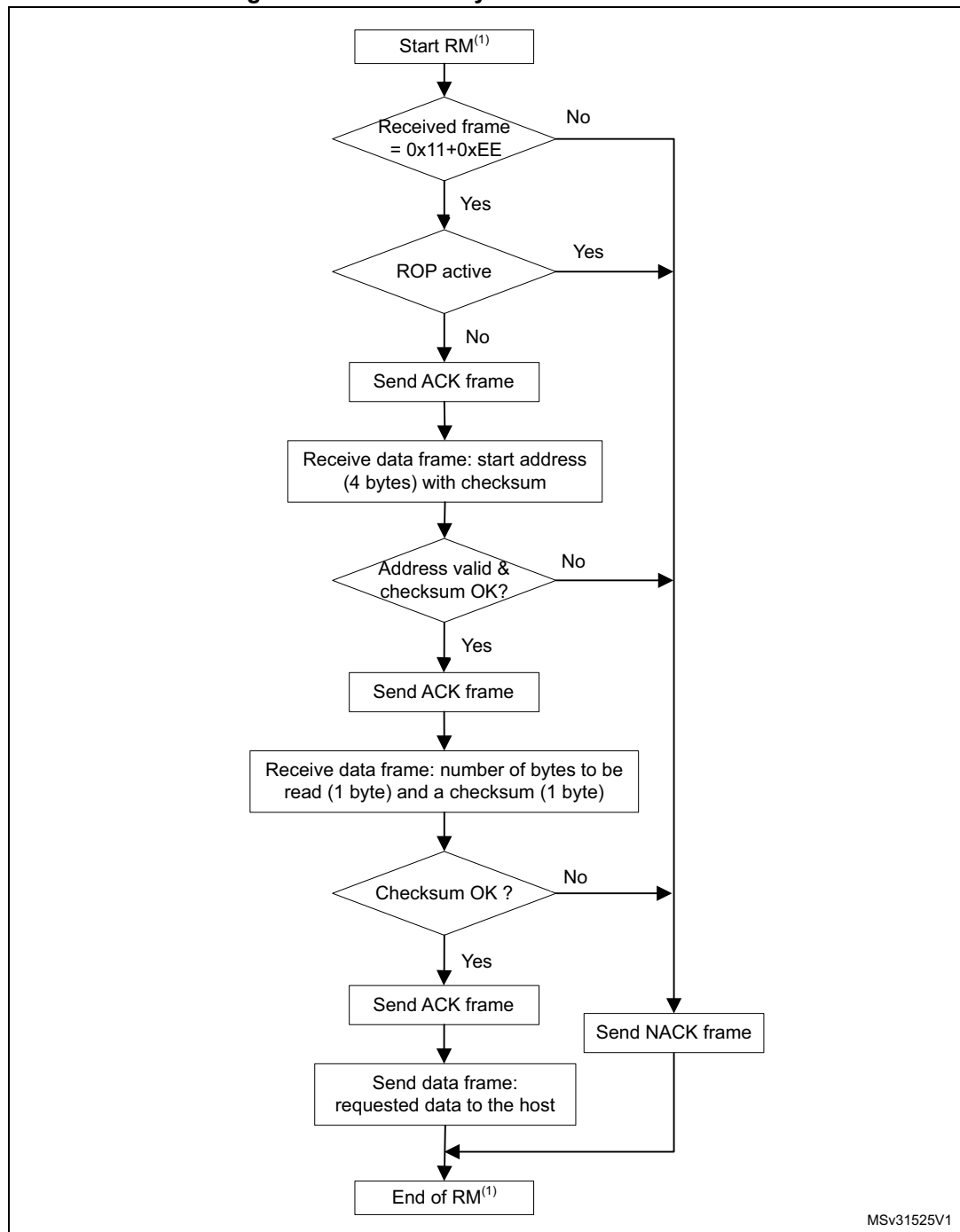
1. Bytes 1-2: 0x11+0xEE
2. Wait for ACK
3. Bytes 3-6: Start address (byte 3: MSB, byte 6: LSB)
4. Byte 7: Checksum: XOR (byte 3, byte 4, byte 5 and byte 6)
5. Wait for ACK
6. Byte 8: The number of bytes to be read - 1 ( $0 < N \leq 255$ )
7. Byte 9: Checksum: XOR byte 8 (complement of byte 8)

Figure 8. Read memory command: host side



1. RM = Read Memory.

Figure 9. Read memory command: device side



1. RM = Read Memory.



## 2.5 Go command

The Go command is used to execute the downloaded code or any other code, by branching to an address specified by the application. When the bootloader receives the Go command, it transmits the ACK byte to the application. The bootloader then waits for a 4-byte address (byte 1 is the address MSB, and byte 4 is LSB) and a checksum byte, then checks the received address. If the address is valid and the checksum is correct, the bootloader transmits an ACK byte; otherwise, it transmits a NACK byte and aborts the command.

When the address is valid and the checksum is correct, the bootloader firmware performs the following:

1. Initializes the registers of the peripherals used by the bootloader to their default reset values
2. Initializes the user application's main stack pointer
3. Jumps to the memory location programmed in the received 'address + 4' (which corresponds to the address of the application's reset handler). For example, if the received address is 0x08000000, the bootloader jumps to the memory location programmed at address 0x08000004.

In general, the host should send the base address where the application to jump to is programmed.

*Note: Jumping to the application only works if the user application correctly sets the vector table to point to the application address.*

The host sends bytes to the STM32 as follows:

1. Byte 1: 0x21
2. Byte 2: 0xDE
3. Wait for ACK
4. Byte 3 to byte 6: start address
  - byte 3: MSB
  - byte 6: LSB
5. Byte 7: checksum: XOR (byte 3, byte 4, byte 5 and byte 6)
6. Wait for ACK

Figure 10. Go command: host side

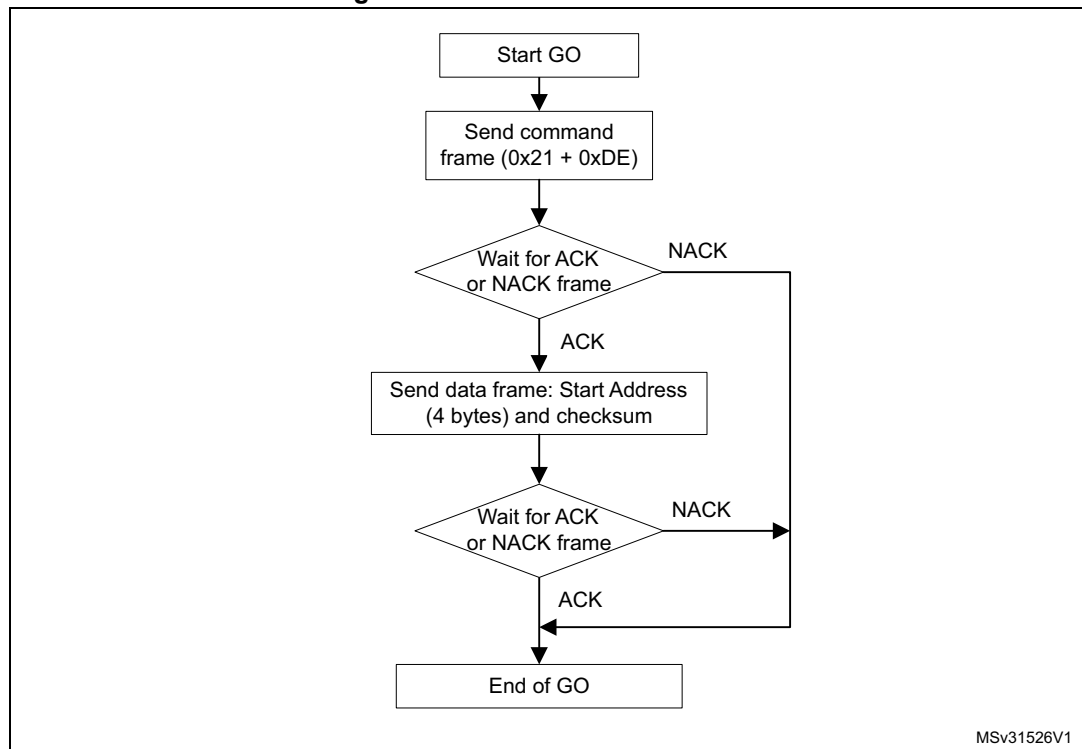
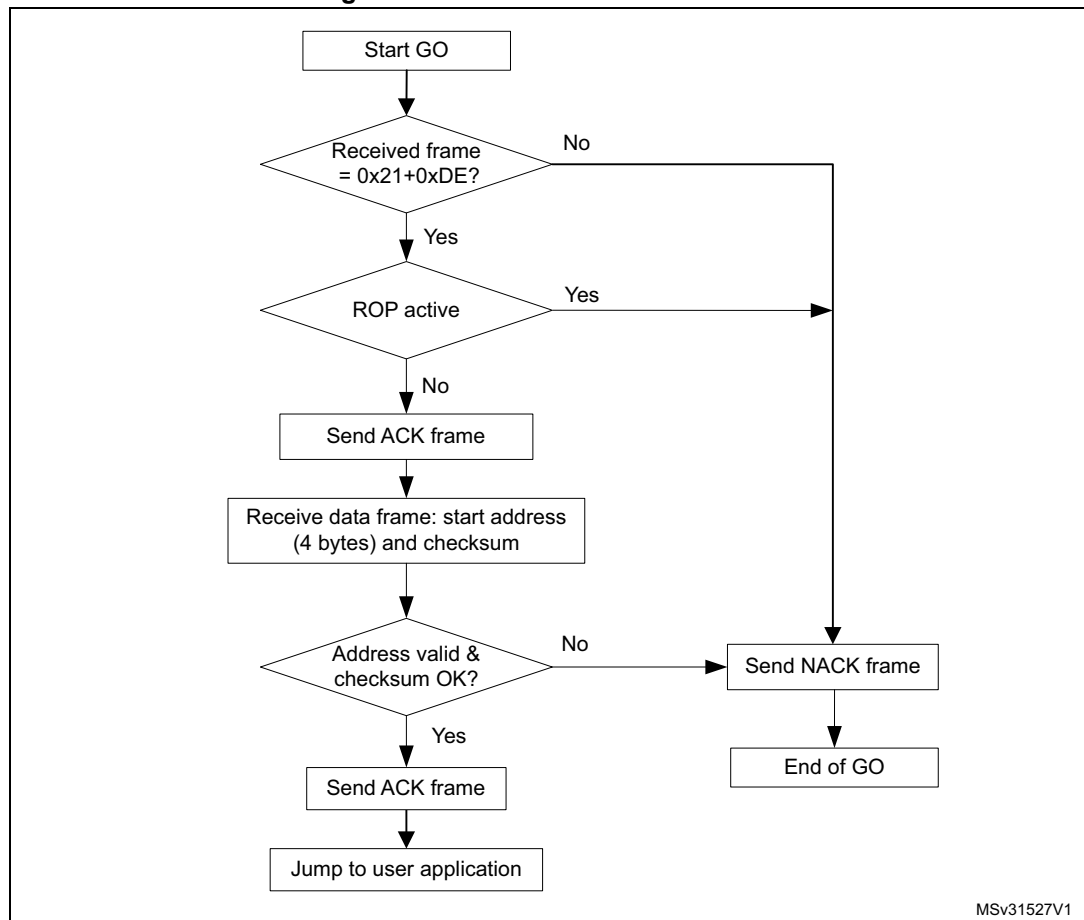


Figure 11. Go command: device side



## 2.6 Write memory command

The Write Memory command is used to write data to any valid memory address (see [Note:](#) below) of RAM, Flash memory, or the Option byte area.

When the bootloader receives the Write Memory command, it transmits the ACK byte to the application. The bootloader then waits for a 4-byte address (byte 1 is the address MSB, and byte 4 is the LSB) and a checksum byte, and then checks the received address.

If the received address is valid and the checksum is correct, the bootloader transmits an ACK byte; otherwise, it transmits a NACK byte and aborts the command. When the address is valid and the checksum is correct, the bootloader:

1. Gets a byte, N, which contains the number of data bytes to be received
2. Receives the user data ((N + 1) bytes) and the checksum (XOR of N and of all data bytes)
3. Programs the user data to memory, starting from the received address

At the end of the command, if the write operation was successful, the bootloader transmits the ACK byte; otherwise, it transmits a NACK byte to the application and aborts the command.

If the Write Memory command is issued to the Option byte area, all options are erased before writing the new values. At the end of the command, the bootloader generates a system Reset to take the new configuration of the option byte into account.

The maximum length of the block to be written to the Option bytes depends on the STM32 product, and the address received from the host must be the start address of the Option byte area. For more information about Option bytes, please refer to the STM32 product reference manual.

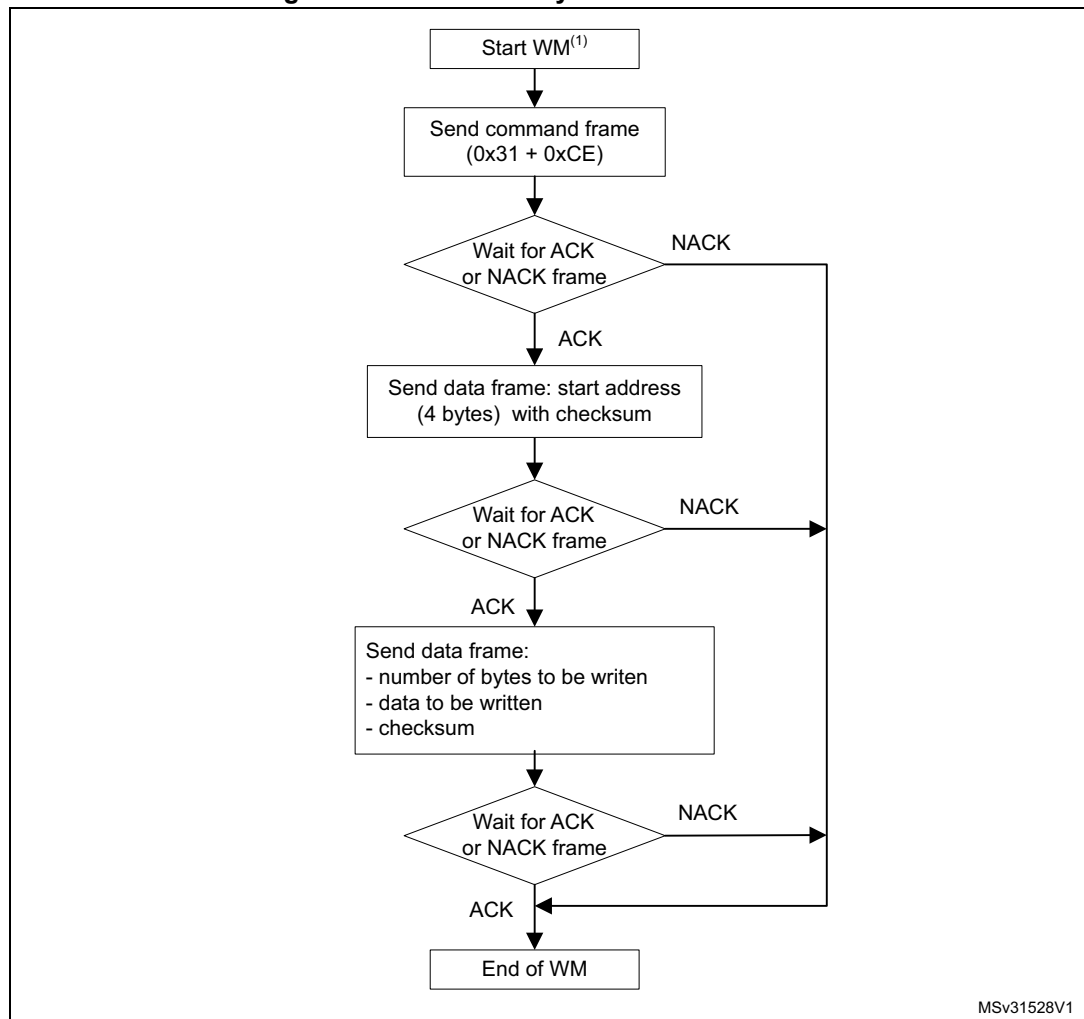
**Note:** *The maximum length of the block to be written to RAM or Flash memory is 256 bytes. When writing to the RAM, take care not to overlap the first RAM memory used by the bootloader firmware.*

*No error is returned when performing write operations to write-protected sectors.*

The host sends the bytes to the STM32 as follows:

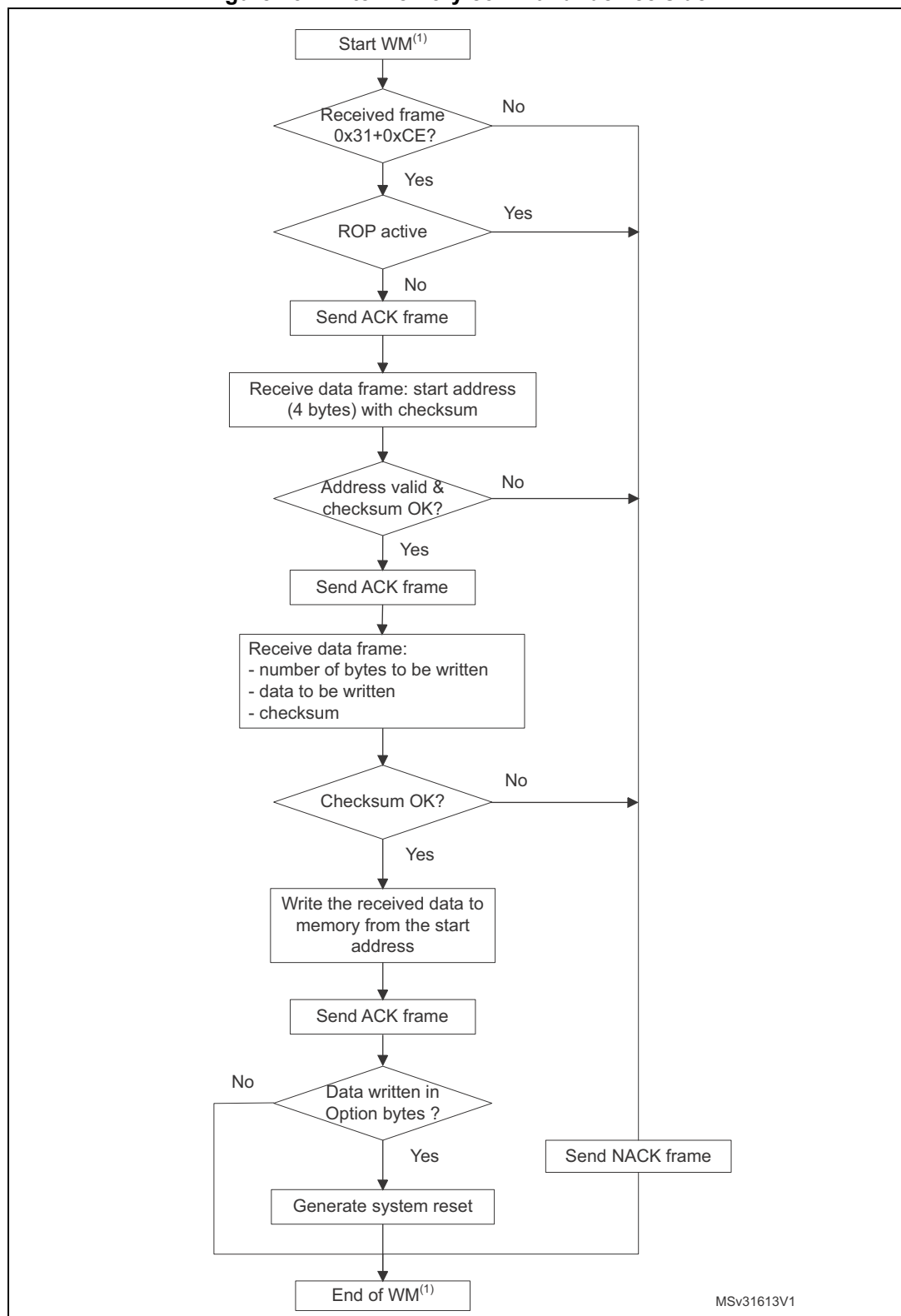
1. Byte 1: 0x31
2. Byte 2: 0xCE
3. Wait for ACK
4. Byte 3 to byte 6: Start address
  - byte 3: MSB
  - byte 6: LSB
5. Byte 7: Checksum: XOR (Byte3, Byte4, Byte5, Byte6)
6. Wait for ACK
7. Byte 8: Number of bytes to be received ( $0 < N \leq 255$ )
8. N + 1 data bytes: (Max 256 bytes)
9. Checksum byte: XOR (N, N+1 data bytes)
10. Wait for ACK

Figure 12. Write memory command: host side



1. WM = Write Memory.

Figure 13. Write memory command: device side



1. WM = Write Memory.

## 2.7 Erase memory command

The Erase Memory command allows the host to erase Flash memory pages or sectors using a two-byte addressing mode. When the bootloader receives the Erase Memory command, it transmits the ACK byte to the host. The bootloader then receives two bytes (number of pages or sectors to be erased), the Flash memory page or sector codes (each of which is coded on two bytes, MSB first) and a checksum byte (XOR of the sent bytes). If the checksum is correct, the bootloader erases the memory and sends an ACK byte to the host; otherwise, it sends a NACK byte to the host and the command is aborted.

### Erase Memory command specifications

The bootloader receives one half-word (two bytes) that contains the number of pages or sectors to be erased diminished by 1. If 0xFFFFY is received (where Y is from 0 to F), a special erase is performed (0xFFFF for global mass erase, 0xFFFE and 0xFFFD respectively for bank1 and bank2 mass erase).

The bootloader receives:

- In the case of a special erase, one byte: the checksum of the previous bytes (e.g. 0x00 for 0xFFFF)
- In the case of a N pages or sectors are erased, the bootloader receives 2 x N bytes, each half-word of which contains a page or sector number that is coded on two bytes, with the MSB first. Then all previous byte checksums are received in one byte.

*Note: Some products do not support the Mass Erase feature, in this case you can use the erase command to erase all pages or sectors instead.  
The maximum number of pages or sectors is relative to the product, and thus should be respected.  
The maximum number of pages or sectors that can be erased in the same command is 512.  
Codes from 0xFFFC to 0xFFFF are reserved.  
No error is returned when performing erase operations on write-protected sectors.*

The host sends bytes to the STM32 as follows:

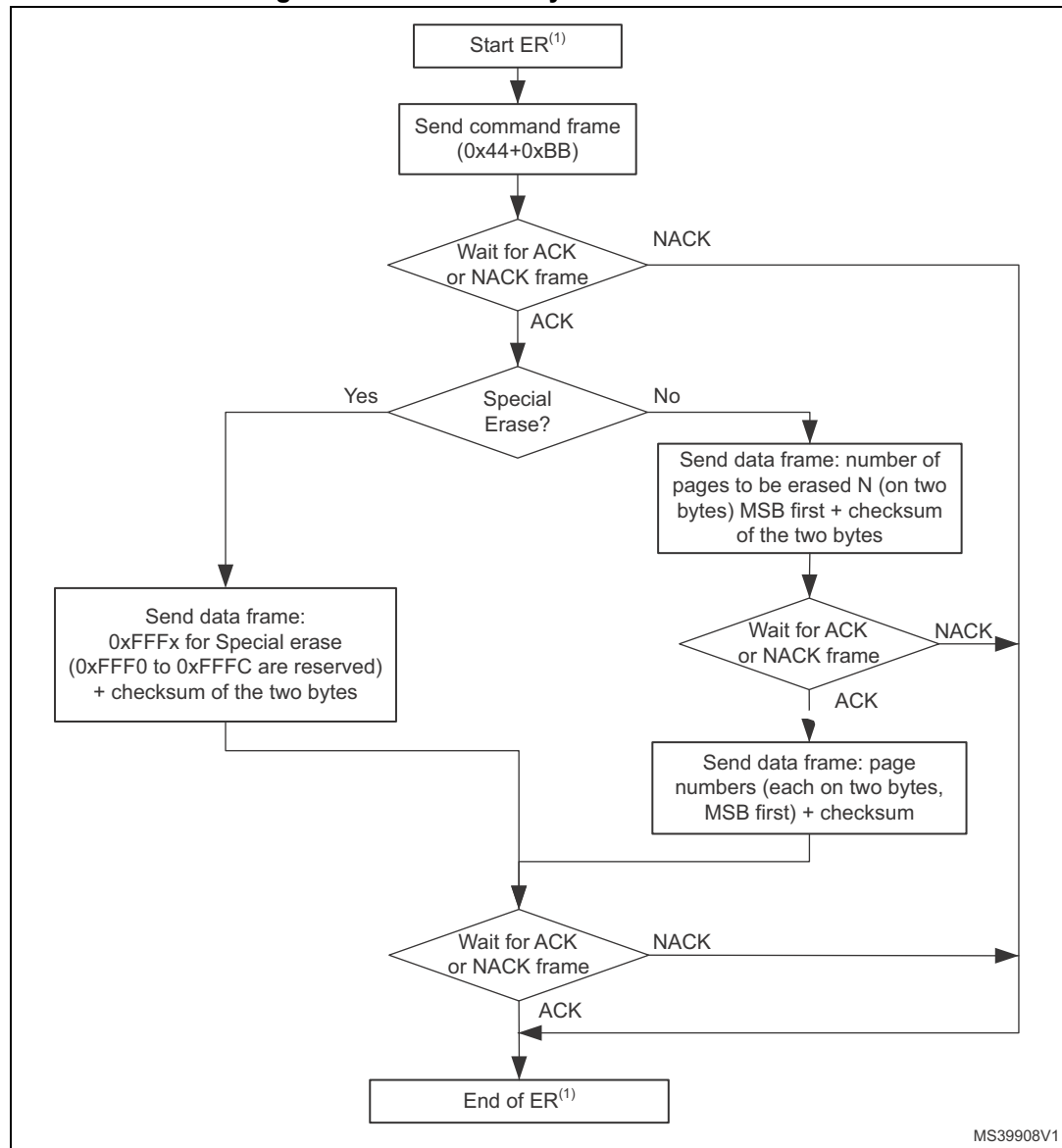
1. Byte 1: 0x44
2. Byte 2: 0xBB
3. Wait for ACK
- **For Special Erase:**
4. Bytes 3-4: Special erase (0xFFFFx)
5. Bytes 5: Checksum of Bytes 3-4
6. Wait for ACK
- **For Page Erase:**
7. Bytes 3-4: Number of pages or sectors to be erased - 1
8. Bytes 5: Checksum of Bytes 3-4
9. Wait for ACK
10. (2 x N) bytes (page numbers or sectors coded on two bytes MSB first) and then the checksum for these bytes.
11. Wait for ACK
- Example of I2C frame:
  - erase page 1:

0x44 0xBB **Wait ACK** 0x00 0x00 0x00 **Wait ACK** 0x00 0x01 0x01 **Wait ACK**

– erase page 1 and page 2:

0x44 0xBB **Wait ACK** 0x00 0x01 0x01 **Wait ACK** 0x00 0x01 0x00 0x02 0x03 **Wait ACK**

**Figure 14. Erase memory command: host side**

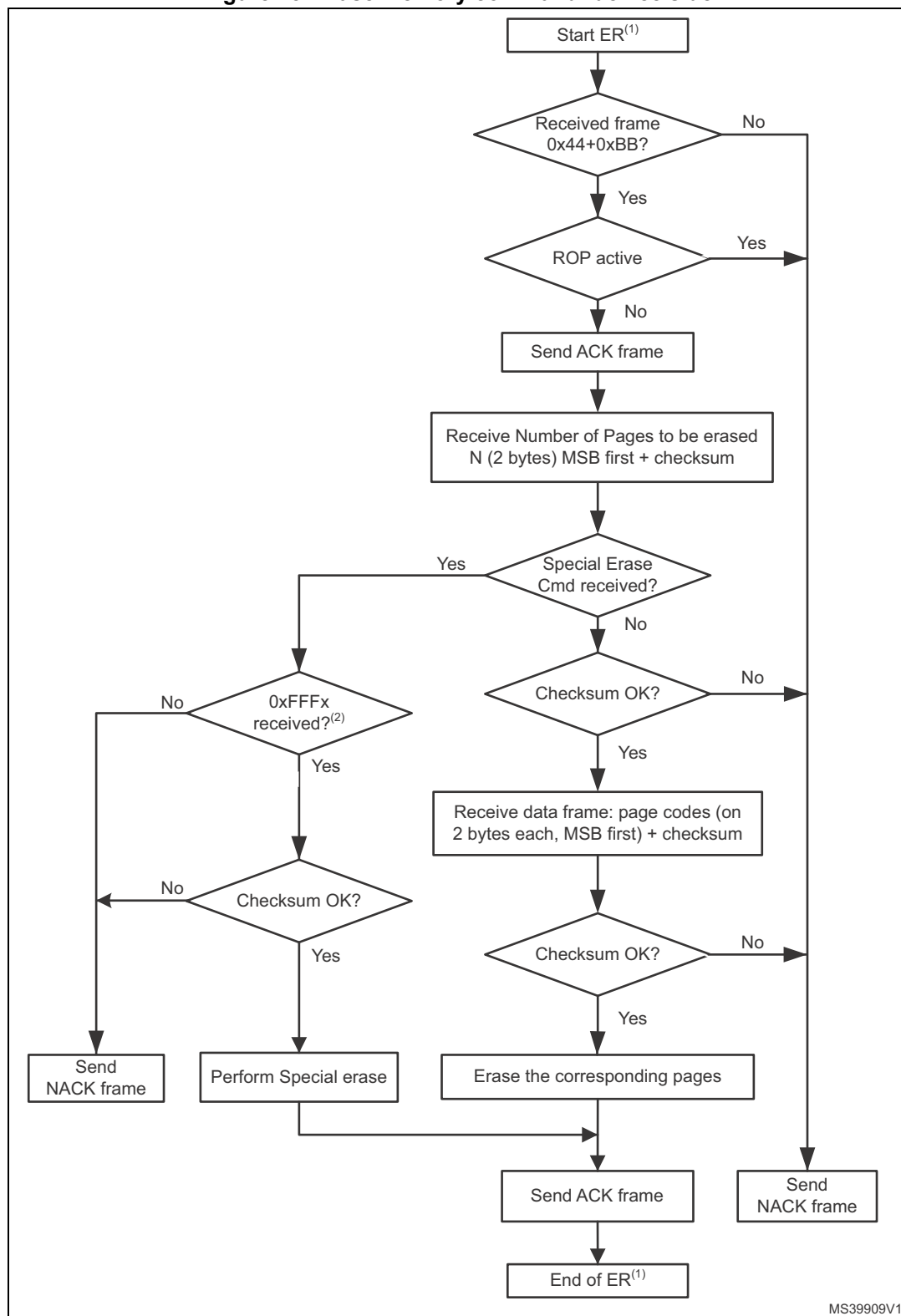


1. ER = Erase Memory.

**Note:** Some products do not support the Special Erase feature. For these products, this command will be NACKed.



Figure 15. Erase memory command: device side



1. ER = Erase Memory.

2. Requested Special Erase command is NACKed if this command is not supported by STM32 product.

## 2.8 Write protect command

The Write Protect command is used to enable the write protection for some or all Flash memory sectors. When the bootloader receives the Write Protect command, it transmits the ACK byte to the host. The bootloader then waits for the number of bytes to be received (sectors to be protected), and then receives the Flash memory sector codes from the application.

At the end of the Write Protect command, the bootloader transmits the ACK byte and generates a system Reset to take the new configuration of the option byte into account.

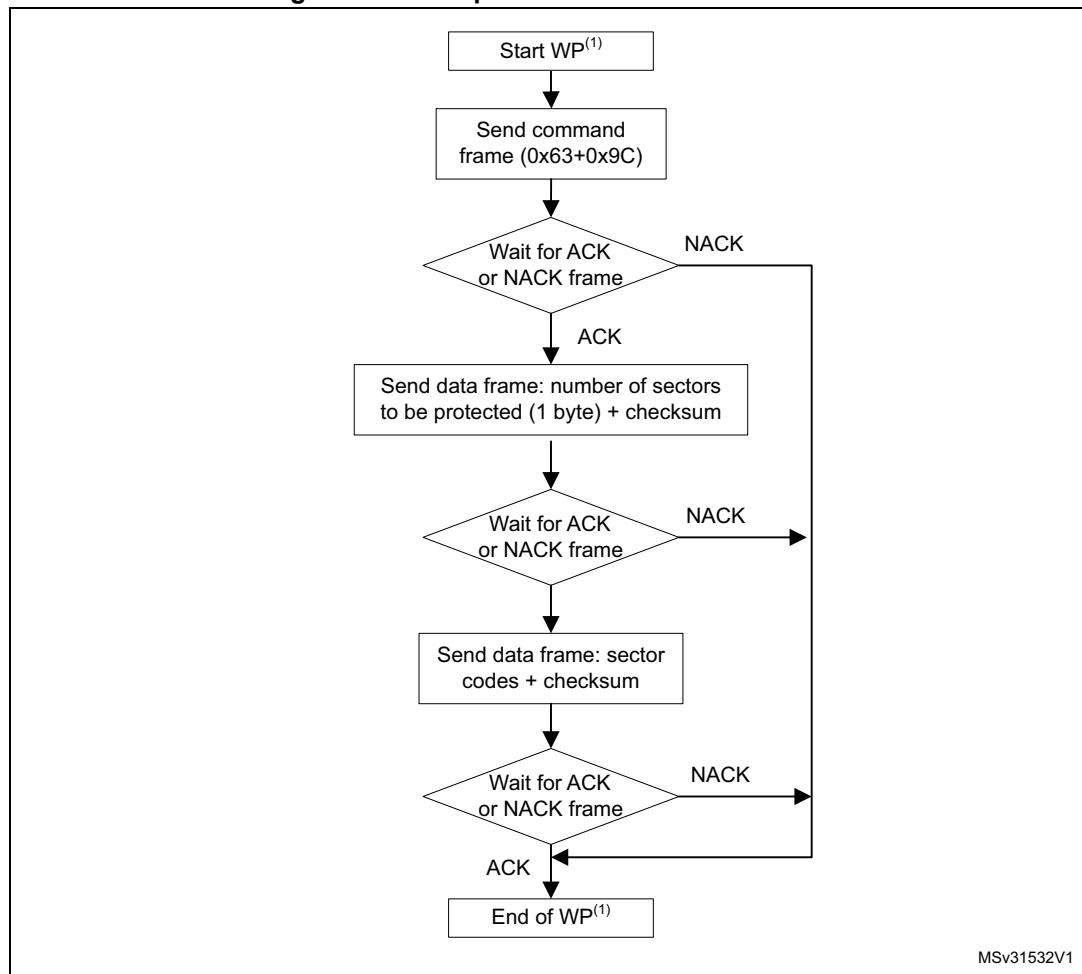
The Write Protect command sequence is as follows:

- The bootloader receives one byte that contains N, the number of sectors to be write-protected - 1 ( $0 \leq N \leq 255$ ).
- The bootloader receives (N + 1) bytes, each byte of which contains a sector code.

*Note: Neither the total number of sectors, nor the sector number to be protected are checked. This means that no error is returned when a command is passed with either a wrong number of sectors to be protected, or a wrong sector number.*

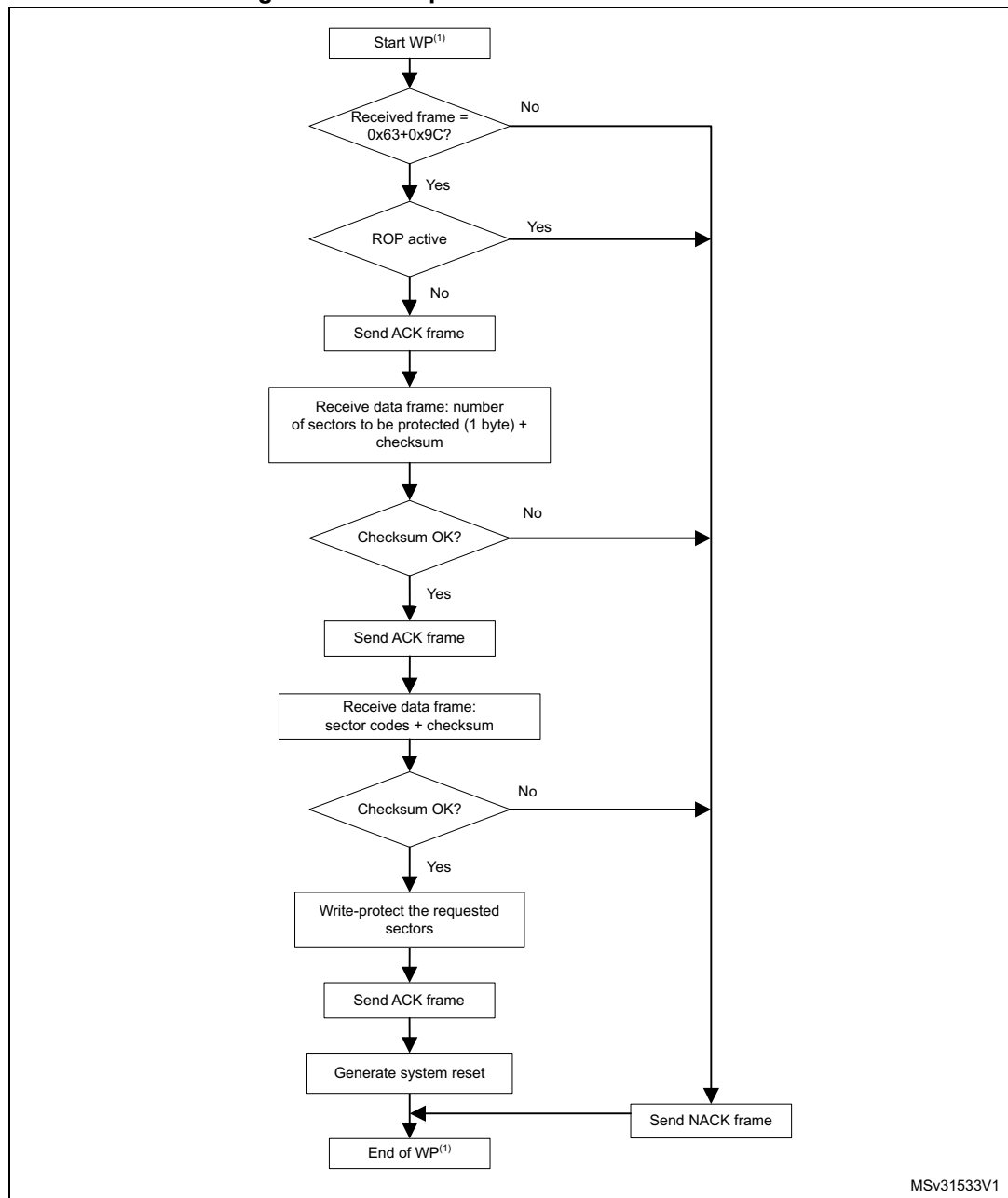
*If a second Write Protect command is executed, the Flash memory sectors that had been protected by the first command become unprotected, and only the sectors passed within the second Write Protect command become protected.*

Figure 16. Write protect command: host side



1. WP = Write Protect.

Figure 17. Write protect command: device side



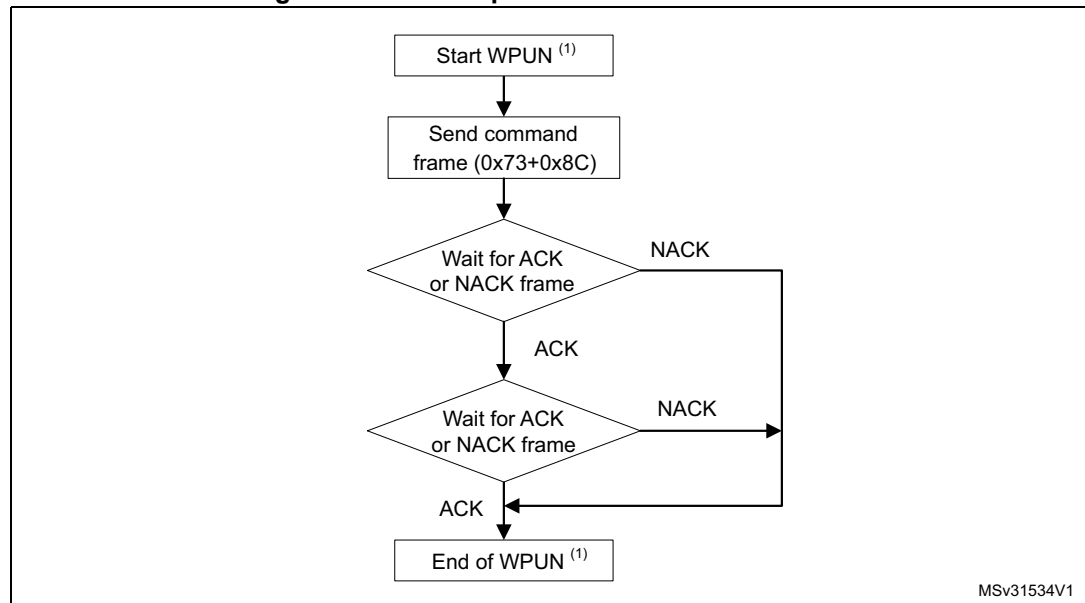
1. WP = Write Protect.

## 2.9 Write unprotect command

The Write Unprotect command is used to disable the write protection of all Flash memory sectors. When the bootloader receives the Write Unprotect command, it transmits the ACK byte to the host. The bootloader then disables the write protection of all Flash memory sectors, and transmits the ACK byte.

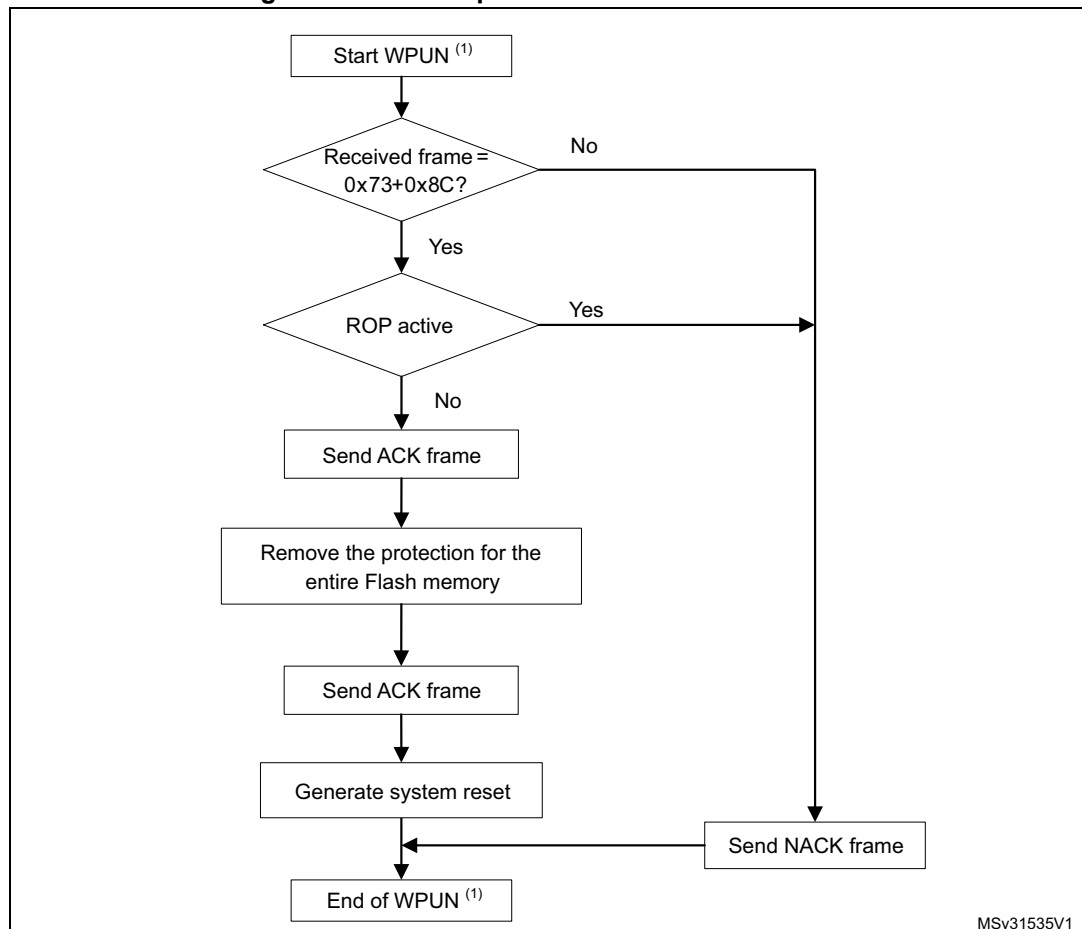
A system reset is generated to take the new configuration of the option byte into account.

**Figure 18. Write unprotect command: host side**



1. WPUN = Write Unprotect.

Figure 19. Write unprotect command: device side



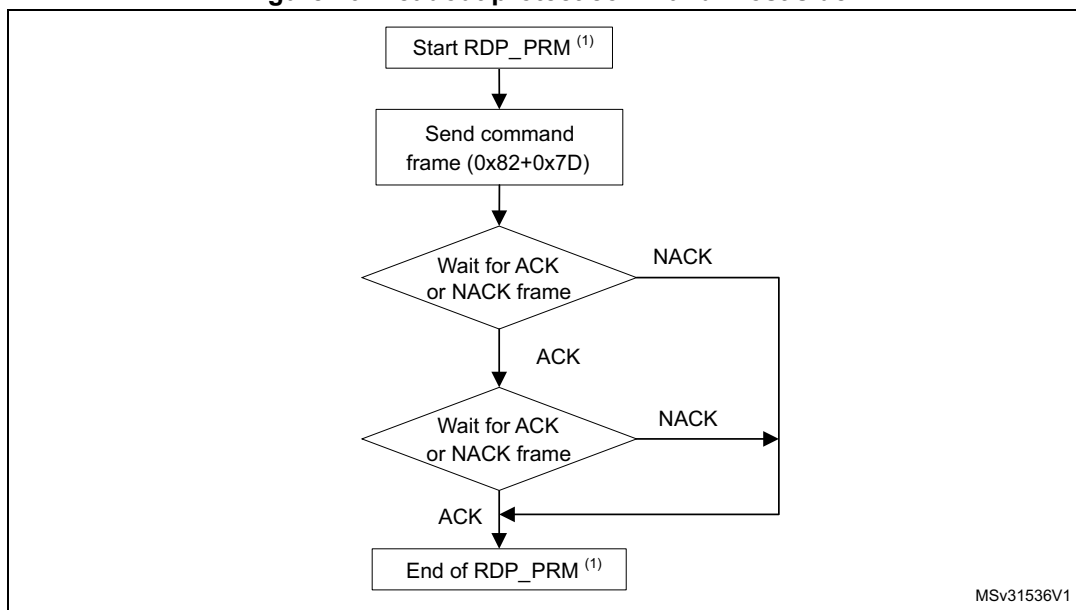
1. WPUN = Write Unprotect.

## 2.10 Readout protect command

The Readout Protect command is used to enable the Flash memory read protection. When the bootloader receives the Readout Protect command, it transmits the ACK byte to the host, and enables the read protection for the Flash memory.

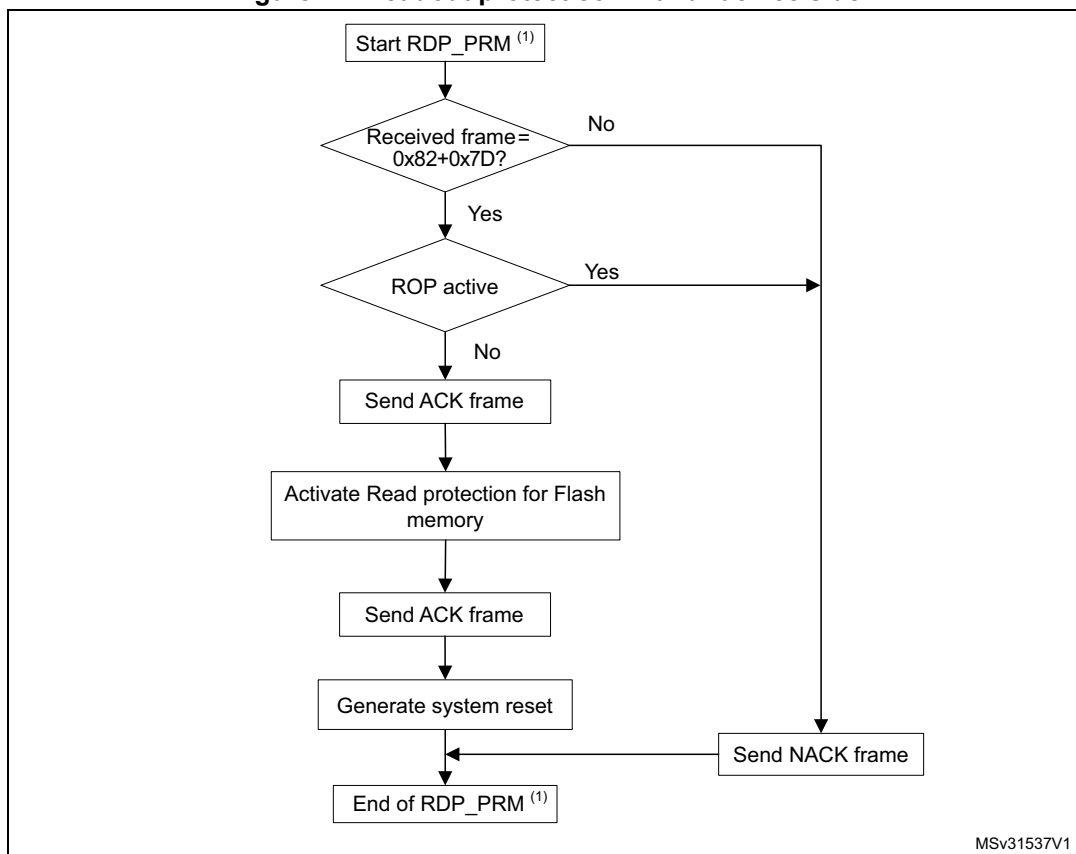
At the end of the Readout Protect command, the bootloader transmits the ACK byte and generates a system Reset to take the new configuration of the option byte into account.

Figure 20. Readout protect command: host side



1. RDP\_PRM = Readout Protect.

Figure 21. Readout protect command: device side



1. RDP\_PRM = Readout Protect.

## 2.11 Readout unprotect command

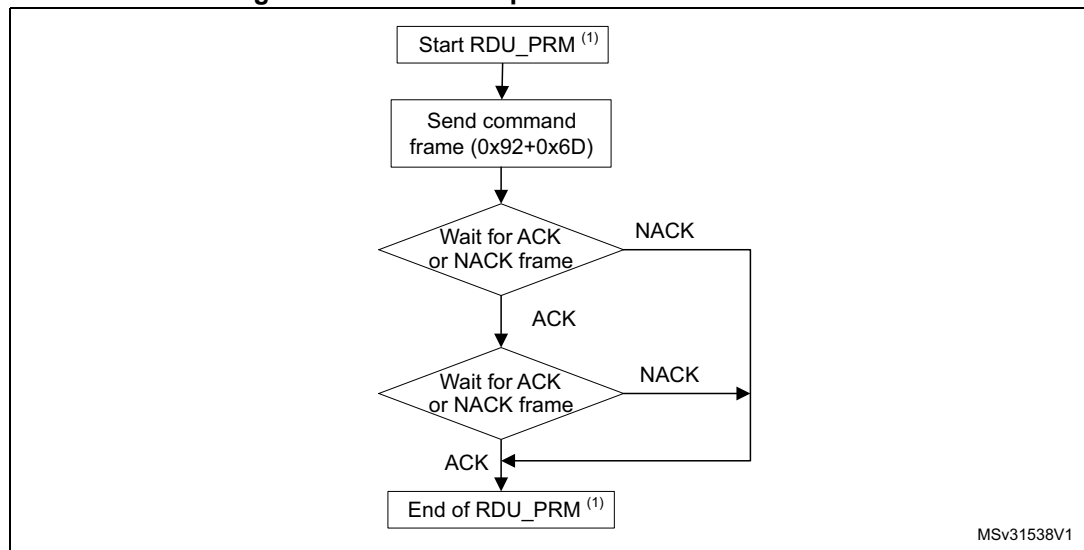
The Readout Unprotect command is used to disable Flash memory read protection. When the bootloader receives the Readout Unprotect command, it transmits the ACK byte to the host.

The bootloader then disables the read protection for the entire Flash memory, which results in an erasure of the entire Flash memory. If the operation is unsuccessful, the bootloader transmits a NACK, and the read protection remains active.

*Note: This operation takes the same time to erase all Flash pages or sectors (or to perform a Mass Erase if it is supported by the product), so the Host should wait until the end of this operation. For the Flash erase timings, please refer to the product datasheet.*

At the end of the Readout Unprotect command, the bootloader transmits an ACK and generates a system Reset to take the new configuration of the option byte into account.

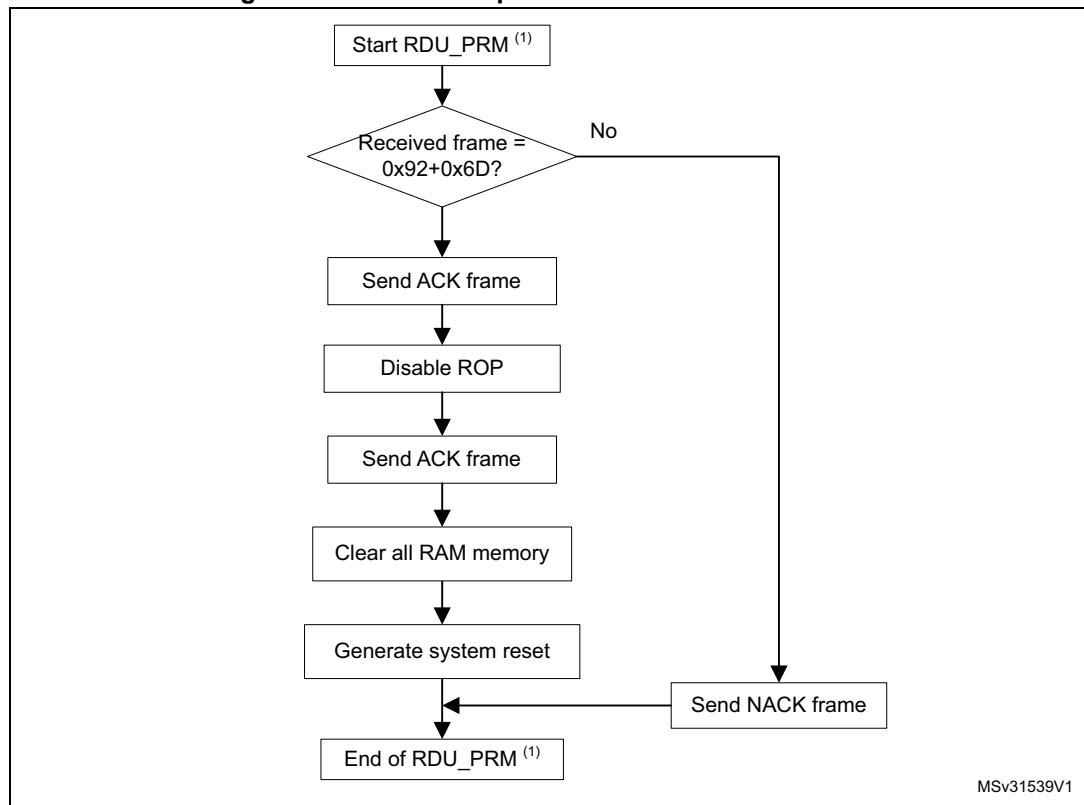
**Figure 22. Readout unprotect command: host side**



1. RDU\_PRM = Readout Unprotect.



Figure 23. Readout unprotect command: device side



1. RDU\_PRM = Readout Unprotect.

## 2.12 No-Stretch Write memory command

The No-Stretch Write Memory command is used to write data to any valid memory area.

When the bootloader receives the No-Stretch Write Memory command, it transmits the ACK byte to the application. The bootloader then waits for a 4-byte address (byte 1 is the address MSB, and byte 4 is the LSB) and a checksum byte, and then checks the received address.

If the received address is valid and the checksum is correct, the bootloader transmits an ACK byte; otherwise, it transmits a NACK byte and aborts the command. When the address is valid and the checksum is correct, the bootloader:

1. Gets a byte, N, which contains the number of data bytes to be received
2. Receives the user data ((N + 1) bytes) and the checksum (XOR of N and of all data bytes)
3. Programs the user data to memory, starting from the received address
4. Returns a Busy state (0x76) while operation is ongoing

At the end of the command, if the write operation was successful, the bootloader transmits the ACK byte; otherwise, it transmits a NACK byte to the application and aborts the command.

**Note:** *If the No-Stretch Write Memory command is issued to the Option byte area, the bootloader generates a system Reset to take the new configuration of the option byte into account.*

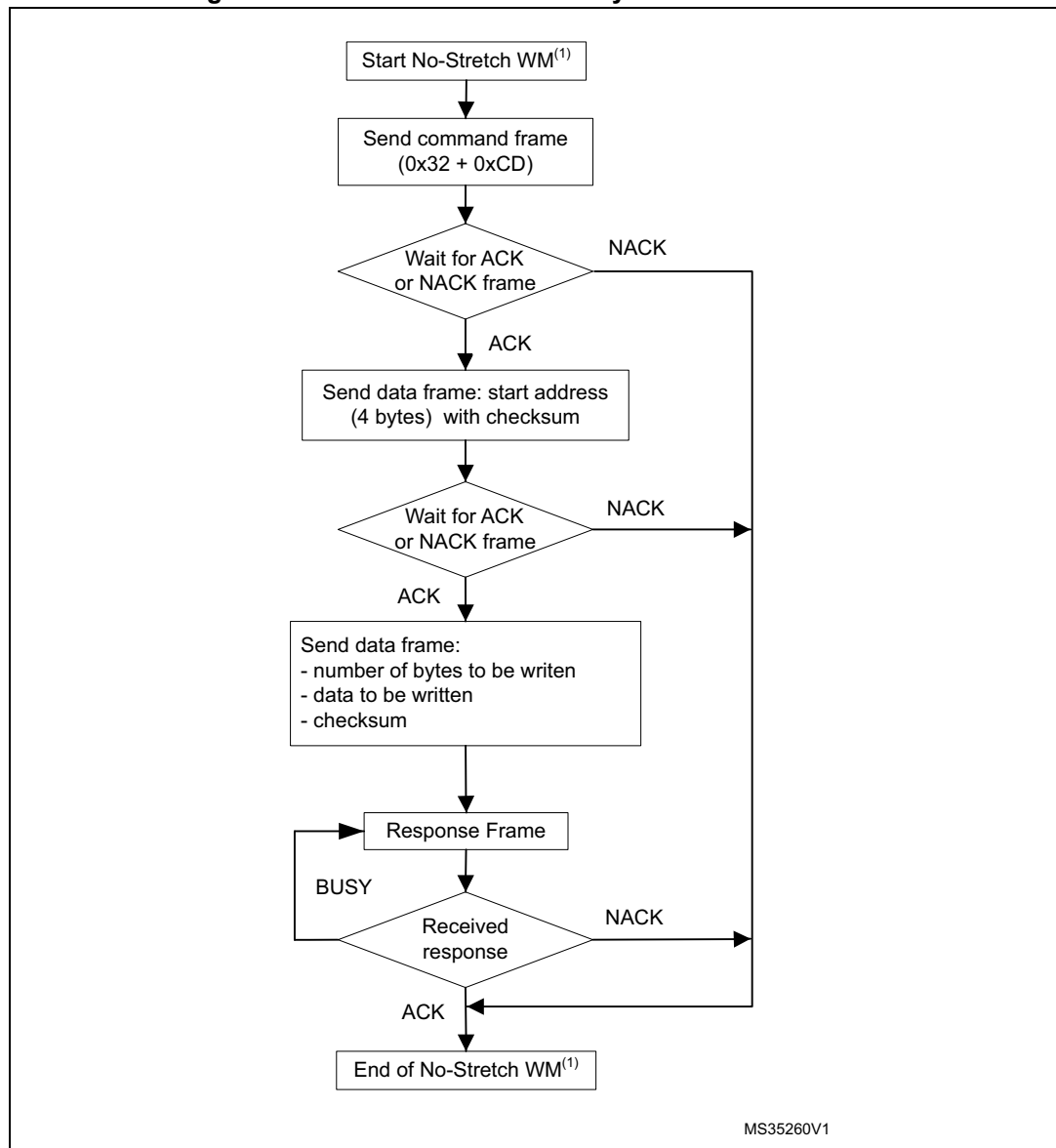
*The maximum length of the block to be written to memory is 256 bytes except for the Option bytes the maximum length depends on the STM32 product, and the address received from the host must be the start address of the Option byte area. For more information, please refer to the STM32 product reference manual.*

*No error is returned when performing write operations to write-protected sectors.*

The host sends the bytes to the STM32 as follows:

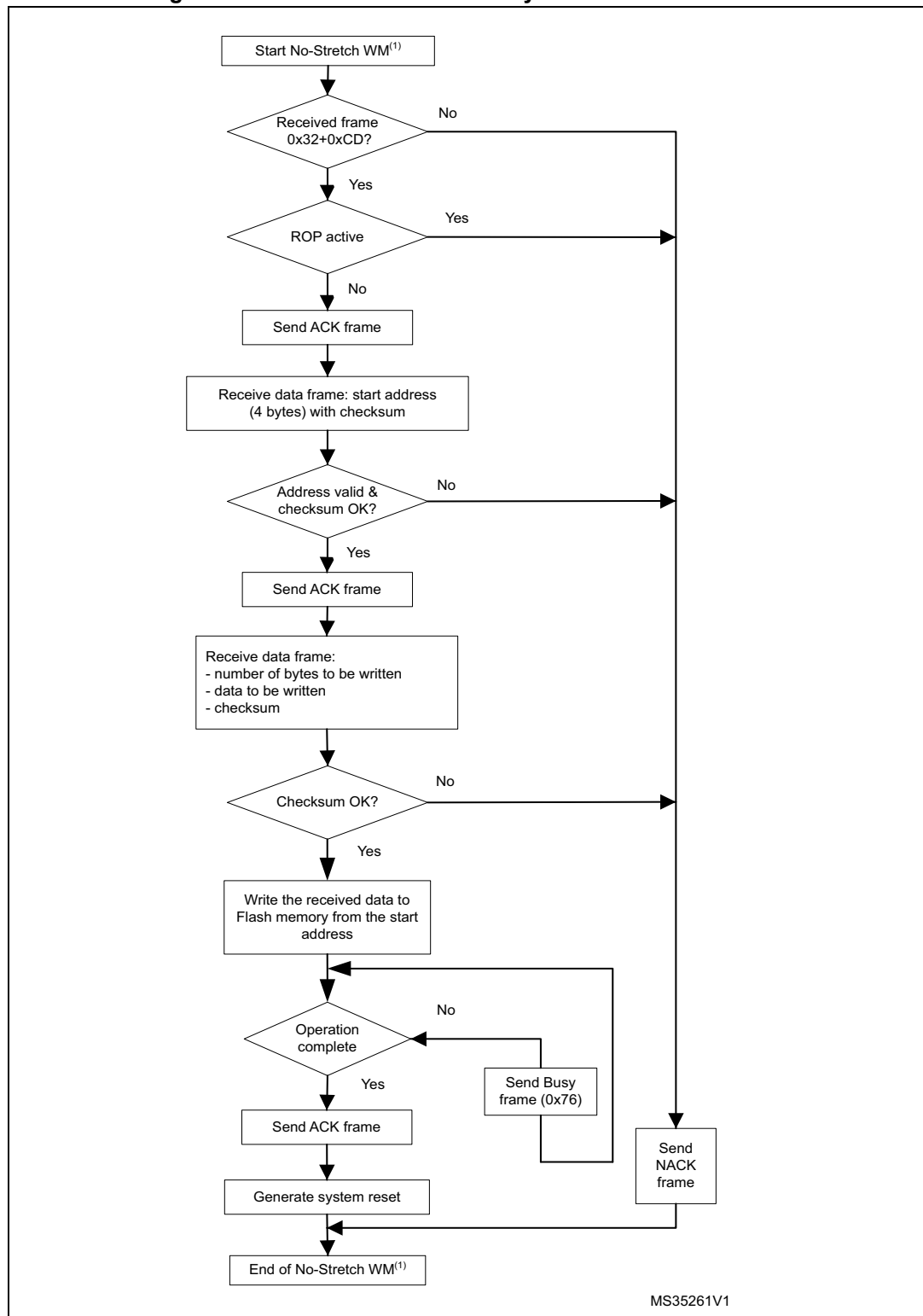
1. Byte 1: 0x32
2. Byte 2: 0xCD
3. Wait for ACK
4. Byte 3 to byte 6: Start address
  - byte 3: MSB
  - byte 6: LSB
5. Byte 7: Checksum: XOR (Byte3, Byte4, Byte5, Byte6)
6. Wait for ACK
7. Byte 8: Number of bytes to be received ( $0 < N \leq 255$ )
8. N + 1 data bytes: (Max 256 bytes)
9. Checksum byte: XOR (N, N+1 data bytes)
10. Wait for ACK (if Busy keep polling on ACK/NACK)

Figure 24. No-Stretch Write memory command: host side



1. WM = Write Memory.

Figure 25. No-Stretch Write memory command: device side



1. WM = Write Memory.

## 2.13 No-Stretch Erase memory command

The No-Stretch Erase Memory command allows the host to erase Flash memory pages or sectors using a two-byte addressing mode. When the bootloader receives the Erase Memory command, it transmits the ACK byte to the host. The bootloader then receives two bytes (number of pages or sectors to be erased), the Flash memory page or sector codes (each of which is coded on two bytes, MSB first) and a checksum byte (XOR of the sent bytes). If the checksum is correct, the bootloader erases the memory (returns Busy state (0x76) while operation is ongoing) then sends an ACK byte to the host; otherwise, it sends a NACK byte to the host and the command is aborted.

### No-Stretch Erase Memory command specifications

The bootloader receives one half-word (two bytes) that contains the number of pages or sectors to be erased diminished by 1. If 0xFFFFY is received (where Y is from 0 to F), a special erase is performed (0xFFFF for global mass erase, 0xFFFE and 0xFFFD respectively for bank1 and bank2 mass erase).

The bootloader receives:

- In the case of a special erase, one byte: the checksum of the previous bytes ( e.g. 0x00 for 0xFFFF)
- In the case of a N pages or sectors are erased, the bootloader receives (2 x N ) bytes, each half-word of which contains a page or sector number that is coded on two bytes, with the MSB first. Then all previous byte checksums are received in one byte.

*Note: Some products do not support the Mass Erase feature, in this case you can use the erase command to erase all pages or sectors instead.  
The maximum number of pages or sectors is relative to the product, and thus should be respected.  
The maximum number of pages or sectors that can be erased in the same command is 512.  
Codes from 0xFFFC to 0xFFFF are reserved.  
No error is returned when performing erase operations on write-protected sectors.*

The host sends bytes to the STM32 as follows:

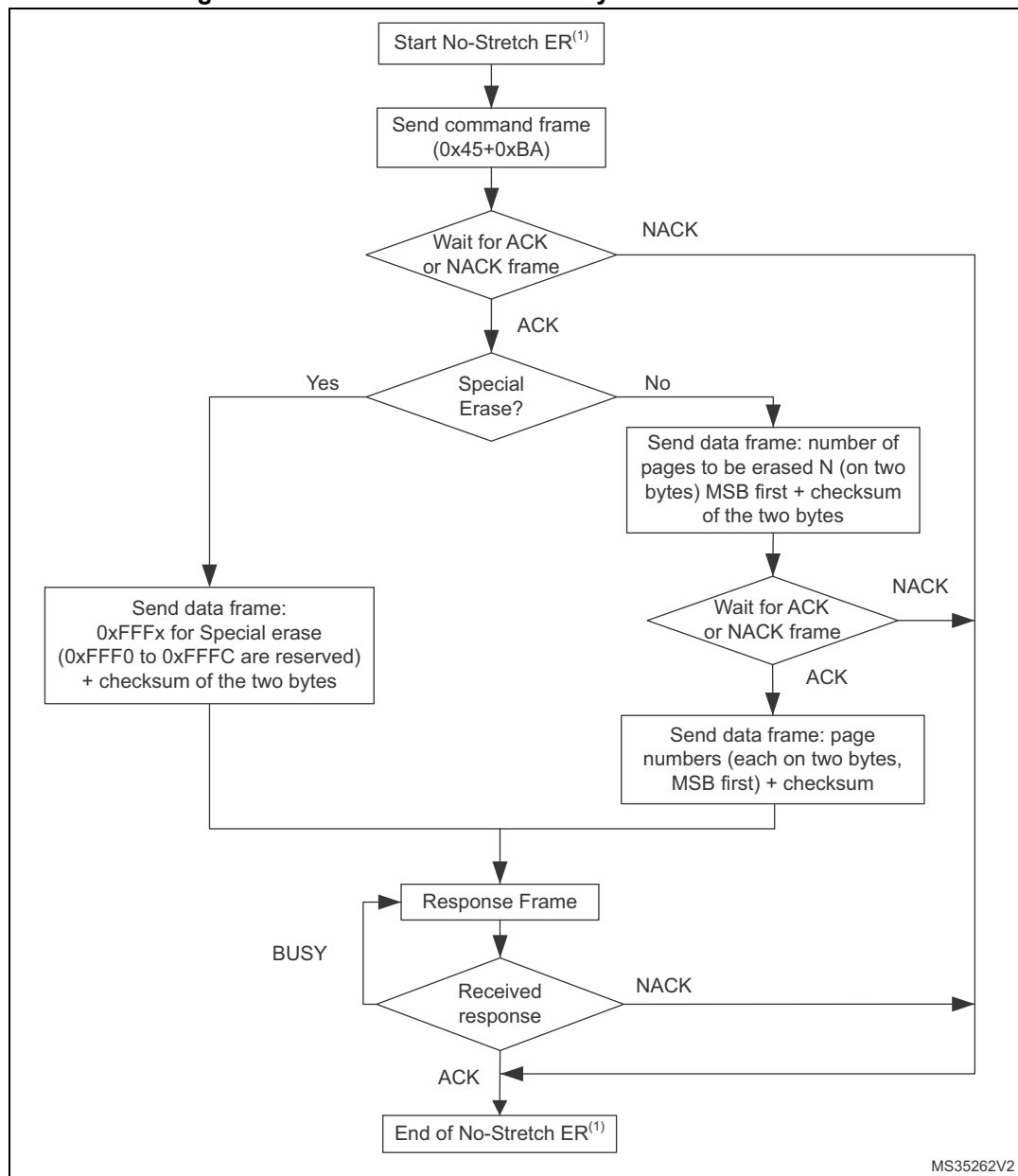
1. Byte 1: 0x45
2. Byte 2: 0xBA
3. Wait for ACK
- **For Special Erase:**
4. Bytes 3-4: Special erase (0xFFFFx)
5. Bytes 5: Checksum of Bytes 3-4
6. Wait for ACK (if Busy keep polling on ACK/NACK)
- **For Page Erase:**
7. Bytes 3-4: Number of pages or sectors to be erased - 1
8. Bytes 5: Checksum of Bytes 3-4
9. Wait for ACK
10. (2 x N) bytes (page numbers or sectors coded on two bytes MSB first) and then the checksum for these bytes.
11. Wait for ACK (if Busy keep polling on ACK/NACK)
- Example of I2C frame:
  - erase page 1:

0x45 0xBA **Wait ACK** 0x00 0x00 0x00 **Wait ACK** 0x00 0x01 0x01 **Wait ACK**

– erase page 1 and page 2:

0x45 0xBA **Wait ACK** 0x00 0x01 0x01 **Wait ACK** 0x00 0x01 0x00 0x02 0x03 **Wait ACK**

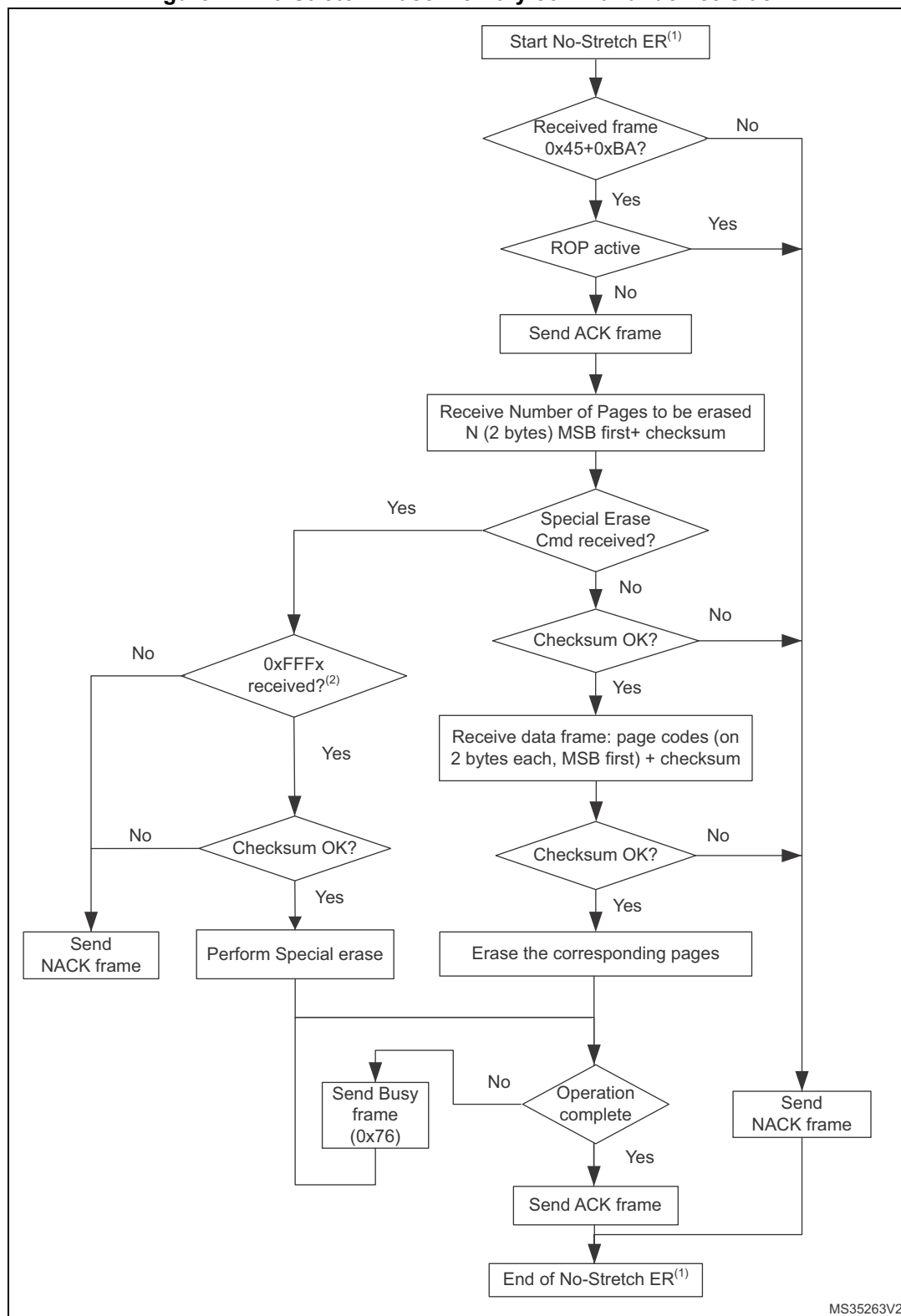
**Figure 26. No-Stretch Erase memory command: host side**



1. ER = Erase Memory.

**Note:** Some products do not support the Special Erase feature. For these products, this command will be NACKed.

Figure 27. No-Stretch Erase memory command: device side



1. ER = Erase Memory.

2. Requested Special Erase command is NACKed if this command is not supported by STM32 product.

## 2.14 No-Stretch Write protect command

The No-Stretch Write Protect command is used to enable the write protection for some or all Flash memory sectors. When the bootloader receives the Write Protect command, it transmits the ACK byte to the host. The bootloader then waits for the number of bytes to be received (sectors to be protected), then receives the Flash memory sector codes from the application and returns Busy state (0x76) while operation is ongoing.

At the end of the No-Stretch Write Protect command, the bootloader transmits the ACK byte and generates a system Reset to take the new configuration of the option byte into account.

The Write Protect command sequence is as follows:

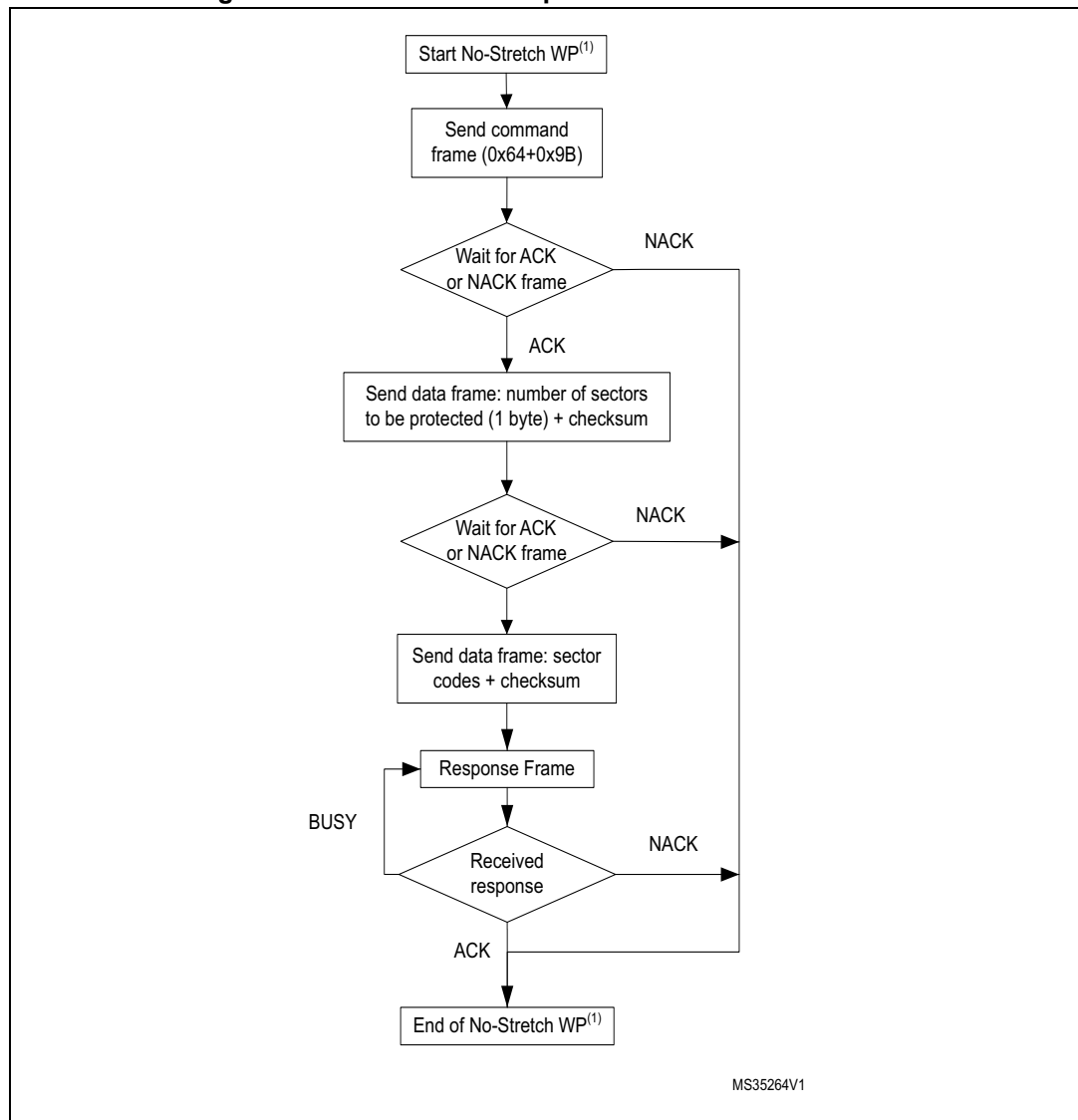
- The bootloader receives one byte that contains N, the number of sectors to be write-protected - 1 ( $0 \leq N \leq 255$ ).
- The bootloader receives (N + 1) bytes, each byte of which contains a sector code.

*Note: Neither the total number of sectors, nor the sector number to be protected are checked. This means that no error is returned when a command is passed with either a wrong number of sectors to be protected, or a wrong sector number.*

*If a second Write Protect command is executed, the Flash memory sectors that had been protected by the first command become unprotected, and only the sectors passed within the second Write Protect command become protected.*

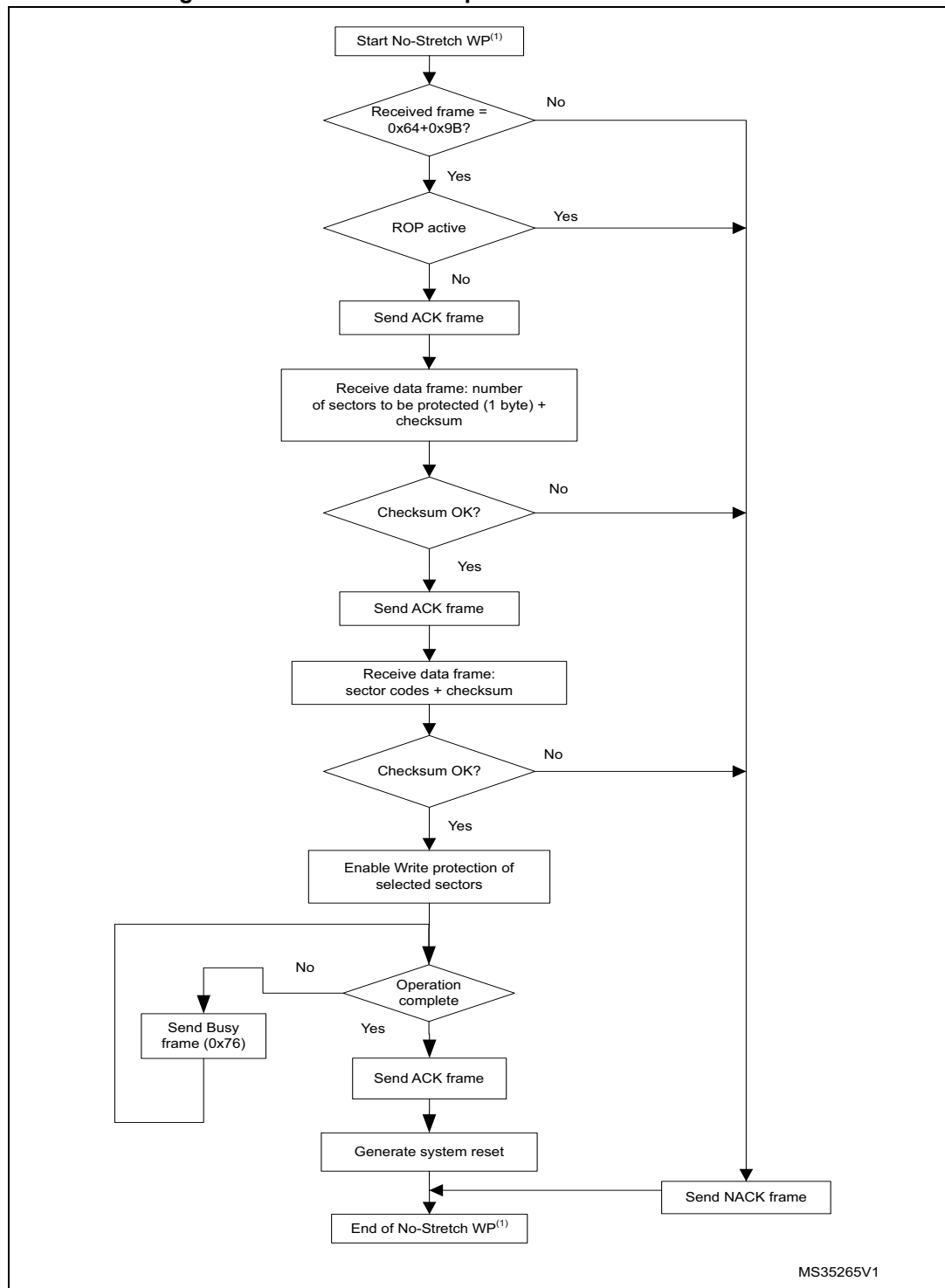


Figure 28. No-Stretch Write protect command: host side



1. WP = Write Protect.

Figure 29. No-Stretch Write protect command: device side



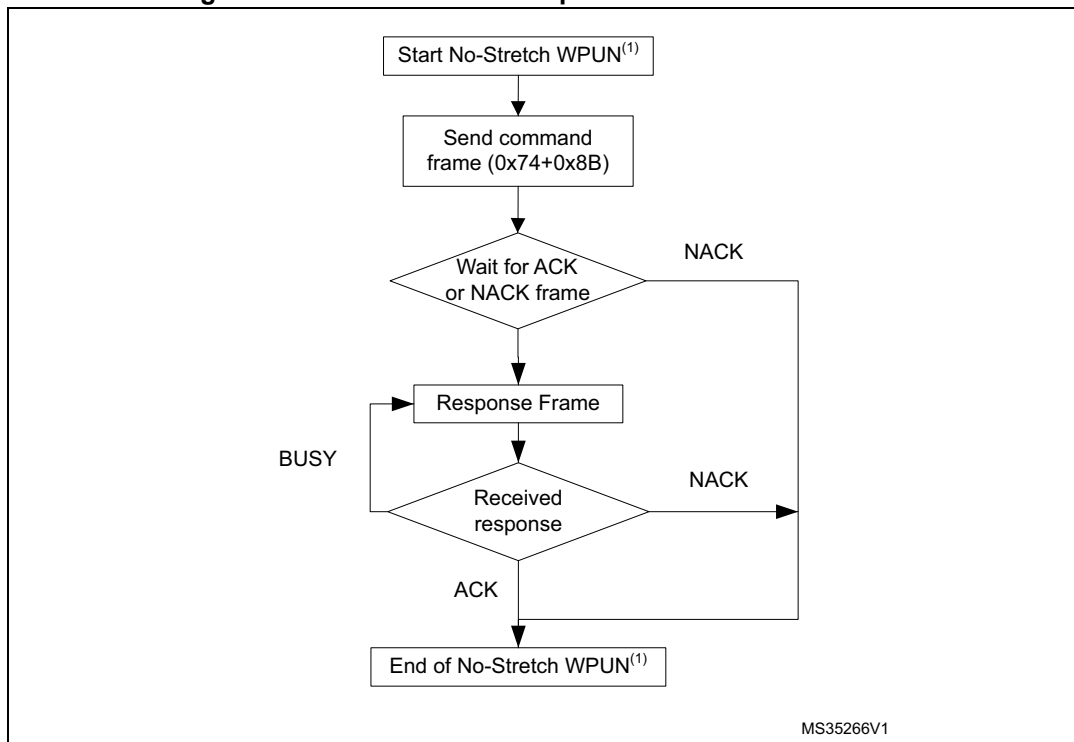
1. WP = Write Protect.

## 2.15 No-Stretch Write unprotect command

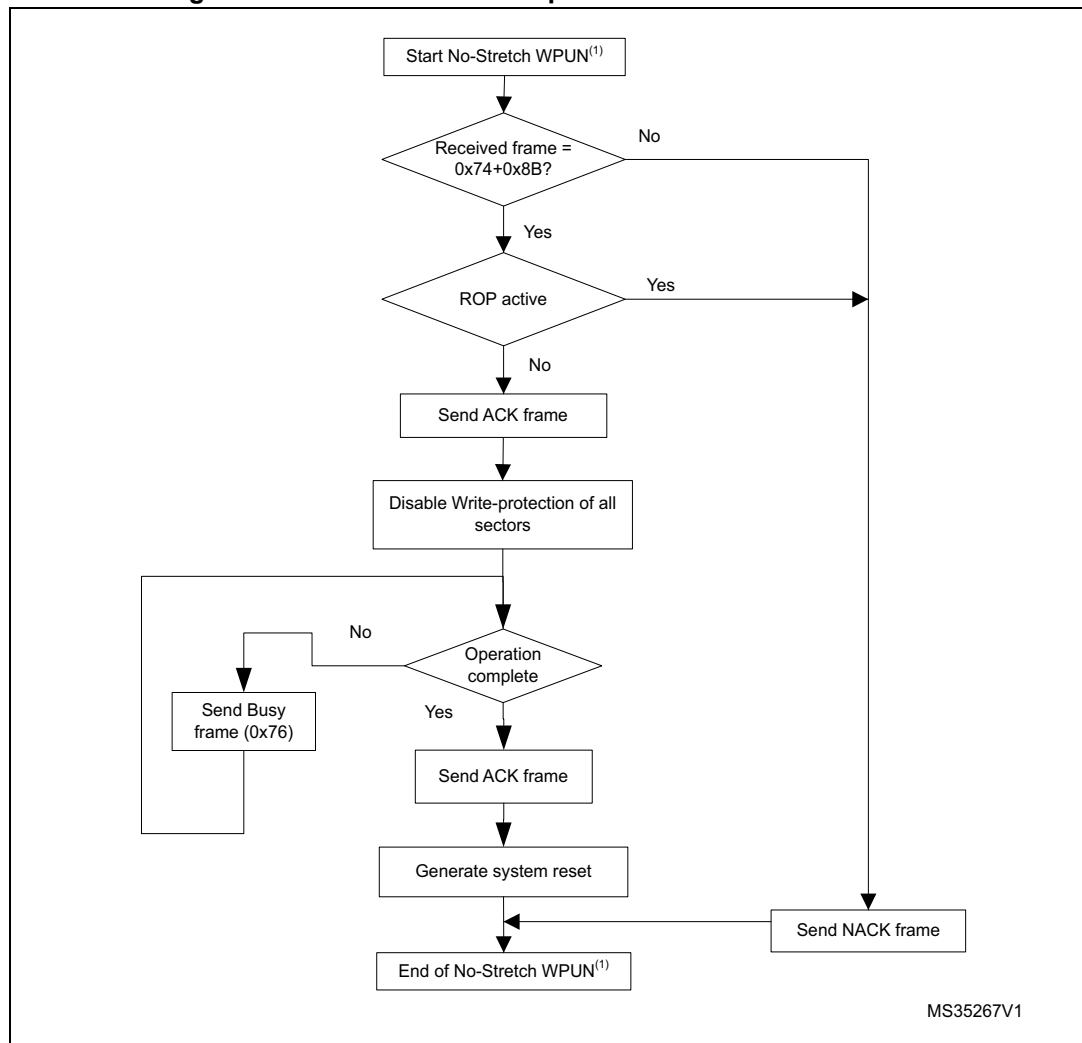
The No-Stretch Write Unprotect command is used to disable the write protection of all Flash memory sectors. When the bootloader receives the Write Unprotect command, it transmits the ACK byte to the host. The bootloader then disables the write protection of all Flash memory sectors, returns Busy state (0x76) while operation is ongoing. At the end it transmits the ACK byte.

A system reset is generated to take the new configuration of the option byte into account.

**Figure 30. No-Stretch Write unprotect command: host side**



1. WPUN = Write Unprotect.

**Figure 31. No-Stretch Write unprotect command: device side**

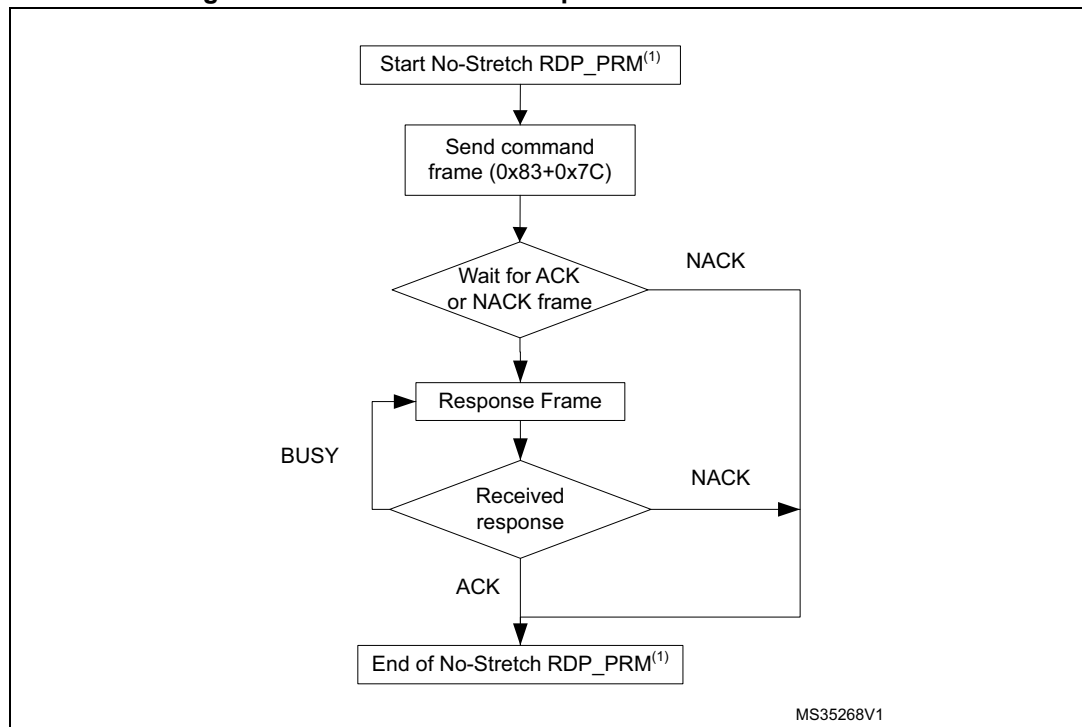
1. WPUN = Write Unprotect.

## 2.16 No-Stretch Readout protect command

The No-Stretch Readout Protect command is used to enable the Flash memory read protection. When the bootloader receives the Readout Protect command, it transmits the ACK byte to the host, enables the read protection for the Flash memory and returns Busy state (0x76) while operation is ongoing.

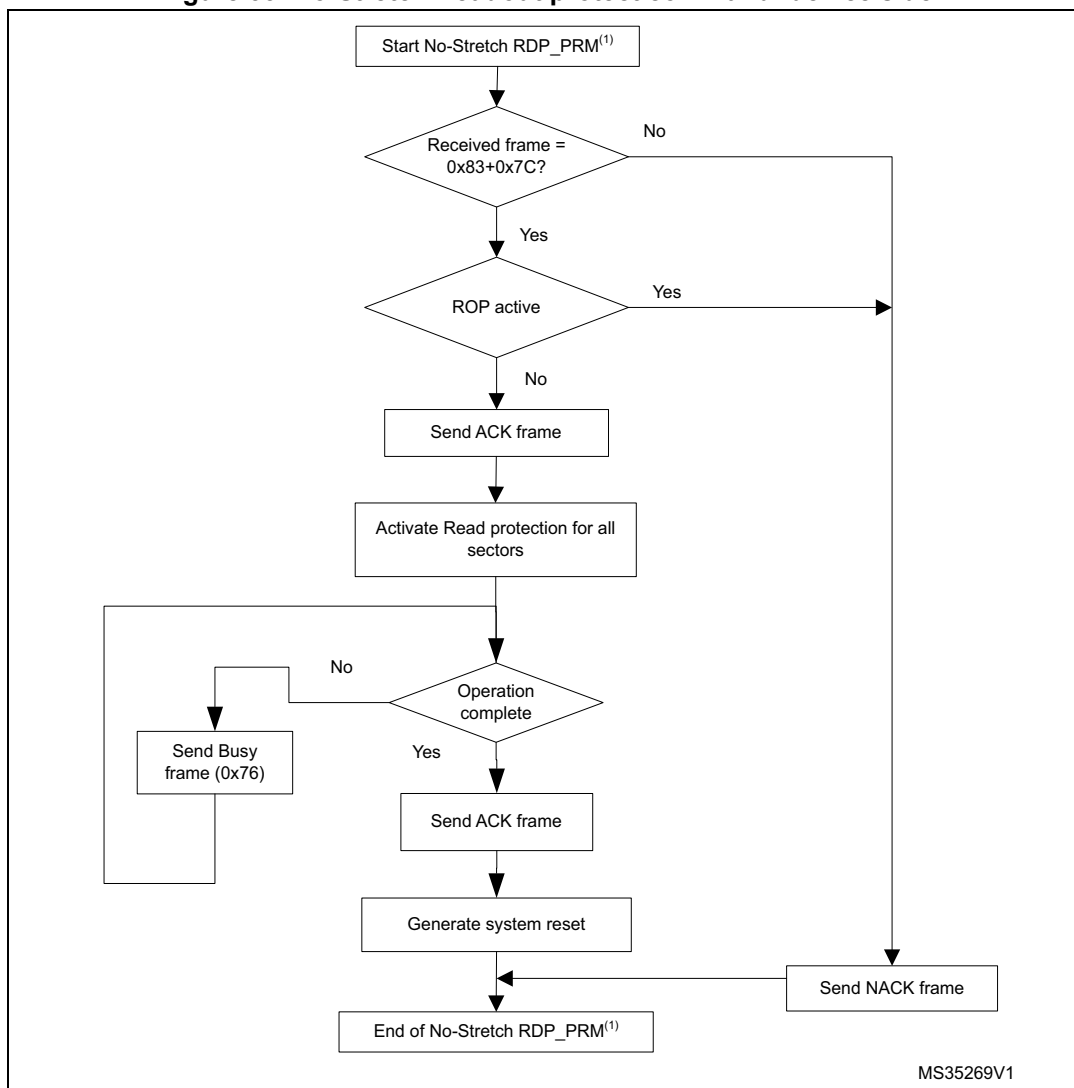
At the end of the No-Stretch Readout Protect command, the bootloader transmits the ACK byte and generates a system Reset to take the new configuration of the option byte into account.

Figure 32. NoStretch Readout protect command: host side



1. RDP\_PRM = Readout Protect.

Figure 33. No-Stretch Readout protect command: device side



1. RDP\_PRM = Readout Protect.

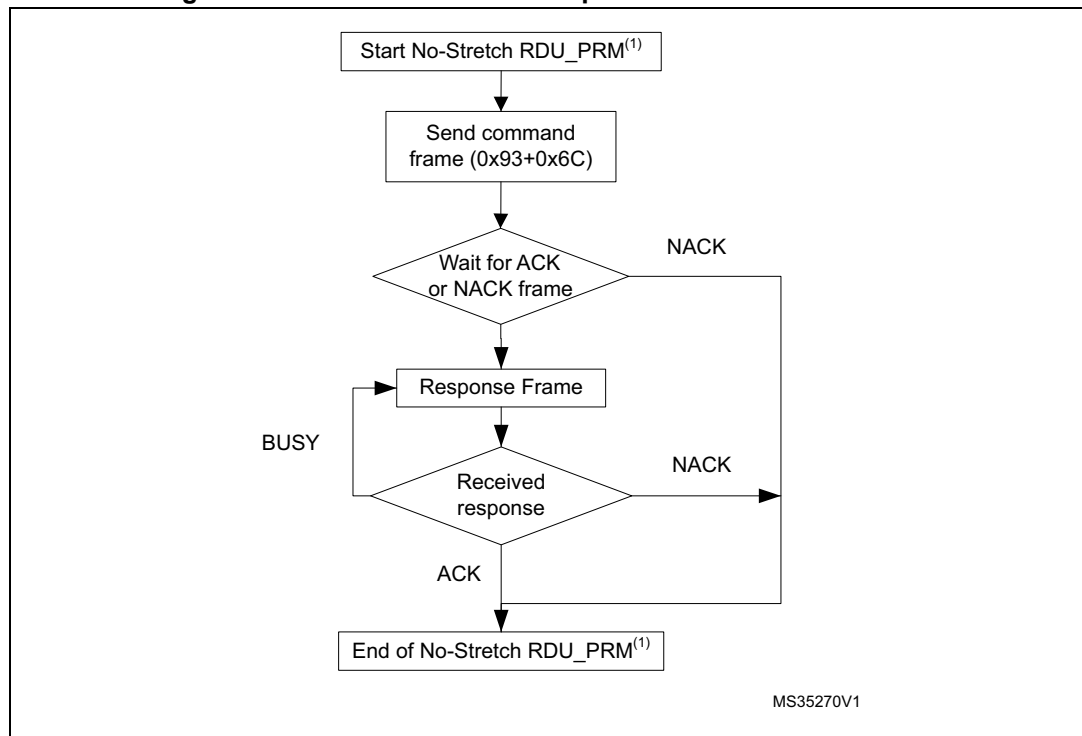
## 2.17 No-Stretch Readout unprotect command

The No-Stretch Readout Unprotect command is used to disable Flash memory read protection. When the bootloader receives the Readout Unprotect command, it transmits the ACK byte to the host.

The bootloader then disables the read protection for the entire Flash memory, which results in an erasure of the entire Flash memory and returns Busy state (0x76) while operation is ongoing. If the operation is unsuccessful, the bootloader transmits a NACK, and the read protection remains active.

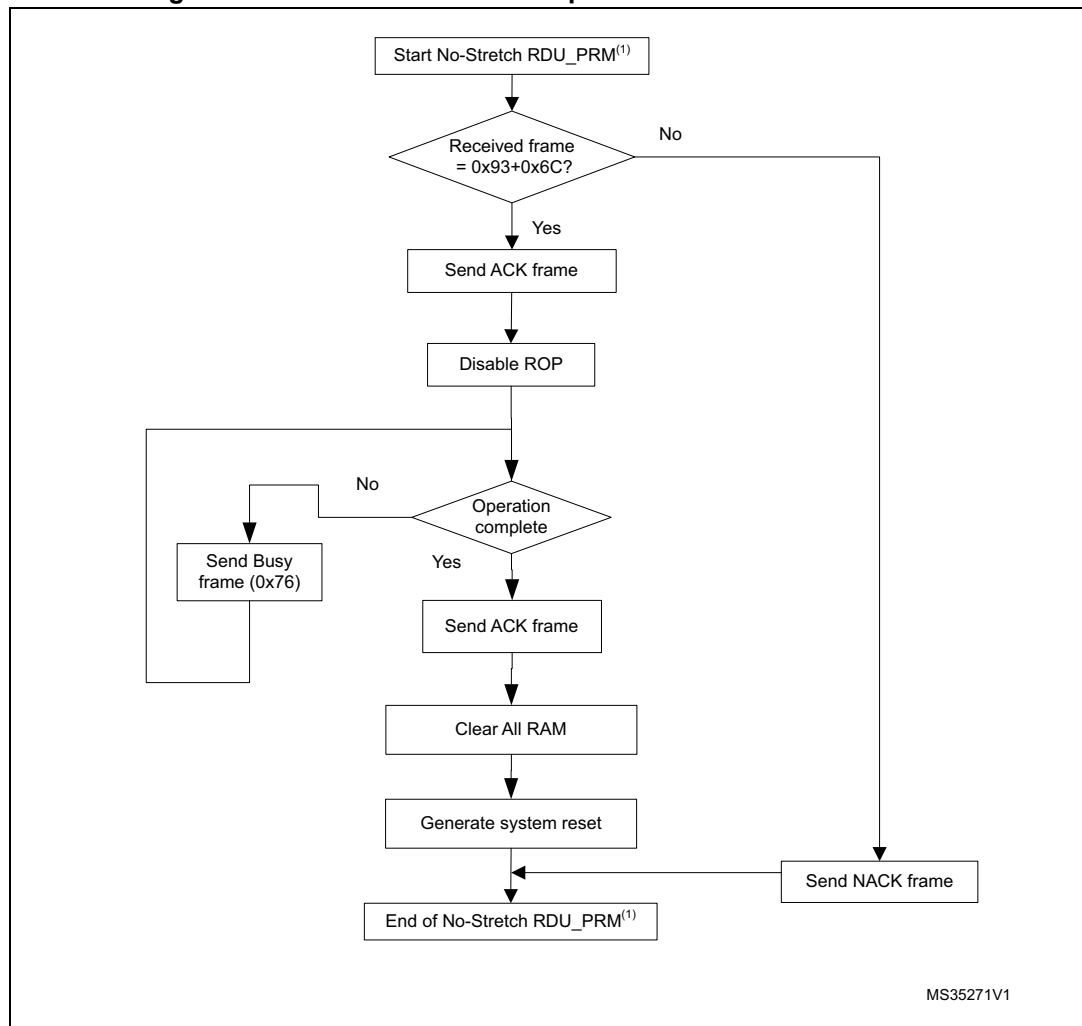
At the end of the No-Stretch Readout Unprotect command, the bootloader transmits an ACK and generates a system Reset to take the new configuration of the option byte into account.

Figure 34. No-Stretch Readout unprotect command: host side



1. RDU\_PRM = Readout Unprotect.

Figure 35. No-Stretch Readout unprotect command: device side



1. RDU\_PRM = Readout Unprotect.



### 3 Bootloader protocol version evolution

[Table 3](#) lists the bootloader versions.

**Table 3. Bootloader protocol versions**

Version	Description
V1.0	Initial protocol version.
V1.1	This version implements new I2C commands: No-Stretch Write Memory, No-Stretch Erase Memory, No-Stretch Write Protect, No-Stretch Write Unprotect, No-Stretch ReadOut Protect and No-Stretch ReadOut Unprotect.

## 4 Revision history

**Table 4. Document revision history**

Date	Revision	Changes
18-Jan-2013	1	Initial release.
02-May-2014	2	Updated list of Applicable products in <a href="#">Table 1</a> . Updated set of commands in <a href="#">Table 2</a> . Updated <a href="#">Section 2: Bootloader command set</a> . Added <a href="#">Section 2.12</a> , <a href="#">Section 2.13</a> , <a href="#">Section 2.14</a> , <a href="#">Section 2.15</a> , <a href="#">Section 2.16</a> and <a href="#">Section 2.17</a> . Added new Protocol version in <a href="#">Table 3</a> .
08-Oct-2015	3	Updated <a href="#">Introduction</a> , <a href="#">Section 2: Bootloader command set</a> , <a href="#">Section 2.7: Erase memory command</a> and <a href="#">Section 2.13: No-Stretch Erase memory command</a> . Updated <a href="#">Table 1: Applicable products</a> and <a href="#">Table 2: I2C bootloader commands</a> . Updated <a href="#">Figure 14: Erase memory command: host side</a> , <a href="#">Figure 15: Erase memory command: device side</a> , <a href="#">Figure 26: No-Stretch Erase memory command: host side</a> and <a href="#">Figure 27: No-Stretch Erase memory command: device side</a> .

**IMPORTANT NOTICE – PLEASE READ CAREFULLY**

STMicroelectronics NV and its subsidiaries ("ST") reserve the right to make changes, corrections, enhancements, modifications, and improvements to ST products and/or to this document at any time without notice. Purchasers should obtain the latest relevant information on ST products before placing orders. ST products are sold pursuant to ST's terms and conditions of sale in place at the time of order acknowledgement.

Purchasers are solely responsible for the choice, selection, and use of ST products and ST assumes no liability for application assistance or the design of Purchasers' products.

No license, express or implied, to any intellectual property right is granted by ST herein.

Resale of ST products with provisions different from the information set forth herein shall void any warranty granted by ST for such product.

ST and the ST logo are trademarks of ST. All other product or service names are the property of their respective owners.

Information in this document supersedes and replaces information previously supplied in any prior versions of this document.

© 2015 STMicroelectronics – All rights reserved

